

**TEST REPORT**  
**IEC/EN 61010-1**  
**Safety requirements for electrical equipment for measurement,**  
**control, and laboratory use**  
**Part 1: General requirements**

**Report Number** ..... : **DE18050148**

**Date of issue**..... : 2019-04-09

**Total number of pages**..... : 86 pages  
 Test report: 82 pages; Appendix: 4 pages

**Applicant's name** ..... : DONGGUAN TEAMWISE ELECTRONIC CO.,LTD

**Address**..... : No.1 Ao Bei Road, Cross Xiang xin West Road, Yan Tian,  
 Fenggang, Dongguan ,Guangdong

**Test specification:**

**Standard**..... : IEC 61010-1:2010 (Third Edition);  
 EN 61010-1:2010 (Third Edition)

**Test procedure** ..... : Voluntary Test

**Non-standard test method** ..... : N/A

**Test Report Form No.** ..... : IEC61010\_1J\_M1

**Test Report Form(s) Originator** .... : VDE Testing and Certification Institute

**Master TRF**..... : 2013-11


**Modified by** ..... : STC

**Modified TRF** ..... : 2018-05

**Copyright © 2013 Worldwide System for Conformity Testing and Certification of Electrotechnical Equipment and Components (IECEE), Geneva, Switzerland. All rights reserved.**

This publication may be reproduced in whole or in part for non-commercial purposes as long as the IECEE is acknowledged as copyright owner and source of the material. IECEE takes no responsibility for and will not assume liability for damages resulting from the reader's interpretation of the reproduced material due to its placement and context.

**Test item description** ..... : Vista UV Reflection Tester

**Trade Mark**..... : 

**Manufacturer** ..... : DONGGUAN TEAMWISE ELECTRONIC CO.,LTD

**Model/Type reference** ..... : GEM-0018-01

**Ratings** ..... : Adapter:  
 - Input: 100~240V AC, 50/60Hz, 0.3A;  
 - Output: 8.4Vdc, 500mA  
 Battery: 7.4V, 450mA

<b>Testing procedure and testing location:</b>		
<input checked="" type="checkbox"/>	<b>Testing Laboratory:</b>	STC (Dongguan) Co., Ltd.
<b>Testing location/ address..... :</b>		Biaojian Science & Technology Park, No. 68, Fumin South Road, Dalang, Dongguan, Guangdong, China
<input type="checkbox"/>	<b>Associated Laboratory:</b>	
<b>Testing location/ address..... :</b>		
<b>Tested by (name + signature) .....</b>		Guofeng Zhou 
<b>Approved by (name + signature) .....</b>		Jerry Cao 
		
<input type="checkbox"/>	<b>Testing procedure: TMP</b>	
<b>Testing location/ address..... :</b>		
<b>Tested by (name + signature) .....</b>		
<b>Approved by (name + signature) .....</b>		
<input type="checkbox"/>	<b>Testing procedure: WMT</b>	
<b>Testing location/ address..... :</b>		
<b>Tested by (name + signature) .....</b>		
<b>Witnessed by (name + signature) .....</b>		
<b>Approved by (name + signature) .....</b>		
<input type="checkbox"/>	<b>Testing procedure: SMT</b>	
<b>Testing location/ address..... :</b>		
<b>Tested by (name + signature) .....</b>		
<b>Approved by (name + signature) .....</b>		
<b>Supervised by (name + signature) .....</b>		
<input type="checkbox"/>	<b>Testing procedure: RMT</b>	
<b>Testing location/ address..... :</b>		
<b>Tested by (name + signature) .....</b>		
<b>Approved by (name + signature) .....</b>		
<b>Supervised by (name + signature) .....</b>		

<b>List of Attachments (including a total number of pages in each attachment)</b>		
Document No.	Documents included / attached to this report (description)	Page No.
1	Product photographs	4

<b>Documents referenced by this report (available on request):</b>		
Document Name or No.	Documents description	Page No.
1	EN 60950-1:2006+A11:2009+A1:2010+A12:2011+A2:2013 test report for adapter # R011505201S	56
2	IEC 62133:2012 test report for internal battery # 150520130GZU-001	30
3	Risk Management Report: Risk Analysis Report # RA-18-120601-1; Risk Assessment Table Risk analysis # RE-18-031501-1; Risk analysis and management methods # A3-03-000115A	12

**Summary of testing:**

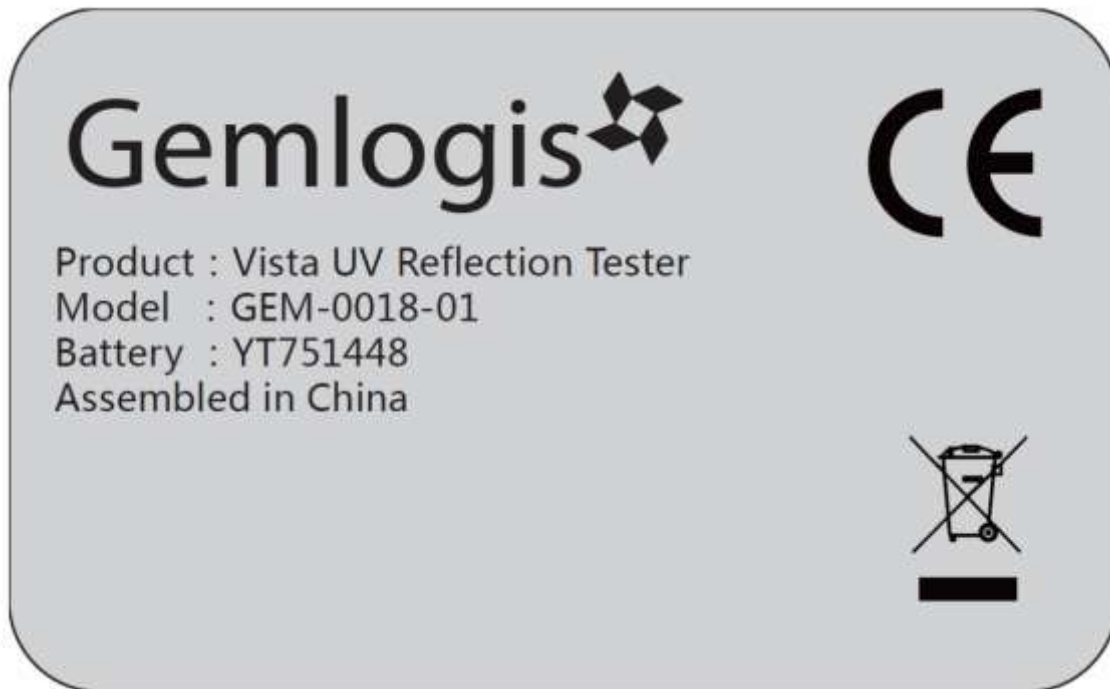
**The Vista UV Reflection Tester passed all applicable tests. Refer to the result for all tests performed.**

<b>Test Report History:</b> This report may consist of more than one report and is valid only with additional or previous issued reports:	
Ref. No.	Item
N/A	
<b>Tests performed (name of test and test clause):</b> SINGLE FAULT CONDITION TESTS (4.4) MAINS SUPPLY (5.1.3) DURABILITY OF MARKINGS TEST (5.3) DETERMINATION OF ACCESSIBLE PARTS (6.2) LIMIT VALUES FOR ACCESSIBLE PARTS (6.3) INSULATION REQUIREMENTS (6.7, ANNEX K) DIELECTRIC VOLTAGE WITHSTAND TEST (6.8) HUMIDITY CONDITIONING TEST (6.8.2) DIGIDITY TEST (8.2.1) IMPACT TEST (8.2.2) DROP TEST OTHER THAN HAND-HELD EQUIPMENT AND DIRECT PLUG-IN EQUIPMENT (8.3.1) LIMITED ENERGY CIRCUIT DETERMINATION TEST (9.4) TEMPERATURE TEST (10.1-10.4) INTEGRITY OF CLEARANCES AND CREEPAGES TEST (10.5.1) RESISTANCE TO HEAT OF NONMETALLIC ENCLOSURE TEST (10.5.2) BATTERY ABNORMAL TEST (13.2.2)	<b>Testing location:</b> STC (Dongguan) Co., Ltd. Biaojian Science & Technology Park, No. 68, Fumin South Road, Dalang, Dongguan, Guangdong, China
<b>Summary of compliance with National Differences</b> <b>List of countries addressed:</b> EU  <input checked="" type="checkbox"/> <b>The product fulfils the requirements of EN 61010-1:2010.</b>	

**Copy of marking plate:**

The artwork below may be only a draft. The use of certification marks on a product must be authorized by the respective NCBs that own these mark

GEM-0018-01 label



Adapter label



**Test item particulars:**

Type of item .....	Measurement
Description of equipment function .....	1. A compact, convenient tester to determine if a gemstone is Earth Mined (Natural) or HPHT treated/Lab Created (CVD) Diamond. 2. Tests loose stones and stones with different type of mounting, from .02ct to 12ct 3. Colourless Diamond
Connection to MAINS supply .....	Internally powered / Appliance coupler via direct plug-in adapter
Overvoltage category .....	II
POLLUTION DEGREE .....	2
Means of protection.....	Class II (isolated)
Environmental conditions.....	Operating conditions: Temperature: 5-40°C Humidity: 50~80% Atmosphere: 80-110kpa
For use in wet locations .....	No
Equipment mobility.....	Portable
Operating conditions .....	Continuous
Overall size of equipment (W x D x H) .....	98mm x 41mm x110mm
Mass of equipment (kg) .....	0.3±0.005kg
Marked degree of protection to IEC 60529 .....	N/A

**Possible test case verdicts:**

- Test case does not apply to the test object.....	N/A (Not Applicable)
- Test object does meet the requirement .....	P (Pass)
- Test object does not meet the requirement .....	F (Fail)

**Testing:**

Date of receipt of test item.....	2018-05-22
Date (s) of performance of tests .....	2018-05-22 to 2018-06-16

**General remarks:**

The test results presented in this report relate only to the object tested.  
 This report shall not be reproduced, except in full, without the written approval of the issuing testing laboratory.  
 "(see ENCLOSURE #)" refers to additional information appended to the report.  
 "(see Form A.xx)" refers to a table appended to the report.  
 Bottom lines for measurement tables Form A.xx are optional if used as record.

Throughout this report a  comma /  point is used as the decimal separator.

**Factory's name and address:**

DONGGUAN TEAMWISE ELECTRONIC  
 CO., LTD  
 No.1 Ao Bei Road, Cross Xiang xin West  
 Road, Yan Tian, Fenggang,  
 Dongguan ,Guangdong

**General product information:**

Description of unit:

1. A compact, convenient tester to determine if a gemstone is Earth Mined (Natural) or HPHT treated/Lab Created (CVD) Diamond.
2. Tests loose stones and stones with different type of mounting, from .02ct to 12ct
3. Colourless Diamond

Description of model differences.

N/A, only one model included in this test report.

Description of special features.

(HV circuits, high pressure systems etc.)

The device can be externally powered by AC/DC adapter or internally powered by Li-Polymer Rechargeable Battery



IEC/EN 61010-1			
Clause	Requirement + Test	Result - Remark	Verdict
4	TESTS		P
4.4	Testing in SINGLE FAULT CONDITIONS		P
4.4.1	Fault tests	(see Form A.1)	P
4.4.2	Application of SINGLE FAULT CONDITIONS		P
4.4.2.1	SINGLE FAULT CONDITIONS not covered by 4.4.2.2 to 4.4.2.14	(see Form A.1)	—
4.4.2.2	PROTECTIVE IMPEDANCE	No protective impedances	N/A
4.4.2.3	PROTECTIVE CONDUCTOR	(see Form A.6)	N/A
4.4.2.4	Equipment or parts for short-term or intermittent operation	Continuous operation	N/A
4.4.2.5	Motors	No motors	—
	– stopped while fully energized		N/A
	– prevented from starting		N/A
	– one phase interrupted (multi-phase)		N/A
4.4.2.6	Capacitors	No such parts	N/A
4.4.2.7	MAINS transformers	Evaluated as part of external adapter See EN 60950-1 test report for detail	N/A
4.4.2.7.2	Short circuit	(see Form A.39)	N/A
4.4.2.7.3	Overload	(see Form A.26B and A.40)	N/A
4.4.2.8	Outputs	No such parts	N/A
4.4.2.9	Equipment for more than one supply	Only one supply	N/A
4.4.2.10	Cooling	(see Form A.26A)No cooling devices	—
	– air holes closed		N/A
	– fans stopped		N/A
	– coolant stopped		N/A
	– loss of cooling liquid		N/A
4.4.2.11	Heating devices	No heating devices	N/A
	– timer overridden		N/A
	– temperature controller overridden		N/A
4.4.2.12	Insulation between circuits and parts		N/A
4.4.2.13	Interlocks	No interlocks devices	N/A
4.4.2.14	Voltage selectors	No the voltage selectors	N/A
4.4.3	Duration of tests	(see Form A.1)	—
4.4.4	Conformity after application of fault conditions	(see Form A.1; A.6, A.18)	N/A

IEC/EN 61010-1			
Clause	Requirement + Test	Result - Remark	Verdict
5	MARKING AND DOCUMENTATION		P
5.1.1	Required equipment markings		—
	– visible from the exterior; or		P
	– visible after removing cover or opening door	No covers or doors	N/A
	– visible after removal from a rack or panel	No rack or panel	N/A
	Not put on parts which can be removed by an operator		N/A
	Letter symbols (IEC 60027) used	No letter symbols used	P
	Graphic symbols (IEC 61010-1: Table 1) used		P
5.1.2	Identification	See the marking plate	P
	Equipment is identified by:		—
	a) Manufacturer's or supplier's name or trademark	Trademark is provided	P
	b) Model number, name or other means	Model name is provided	P
	Manufacturing location identified		P
5.1.3	MAINS supply		P
	Equipment is marked as follows:	Powered by adapter Model: ASC-0966-01 Input: 100~240Vac, 50/60Hz, 0.3A; Output: 8.4Vdc, 0.5A	—
	a) Nature of supply:	See above	—
	1) a.c. RATED MAINS frequency or range of frequencies .....	See above	—
	2) d.c. with symbol 1 .....	See above	—
	b) RATED supply voltage(s) or range .....	See above	—
	c) Max. RATED power (W or VA) or input current .....	See above	—
	The marked value not less than 90 % of the maximum value	(see Form A.2)	P
	If more than one voltage range:		—
	Separate values marked; or		N/A
	Values differ by less than 20 %	(see Form A.2)	N/A
	d) OPERATOR-set for different RATED supply voltages:	No such parts	—
	Indicates the equipment set voltage		N/A
	Portable equipment indication is visible from the exterior		N/A
	Changing the setting changes the indication		N/A
	e) Accessory MAINS socket-outlets accepting standard MAINS plugs are marked:	No MSOs	—
	With the voltage if it is different from the MAINS supply voltage.....		—

IEC/EN 61010-1			
Clause	Requirement + Test	Result - Remark	Verdict
	For use only with specific equipment		N/A
	If not marked for specific equipment it is marked with:		—
	The maximum rated current or power; or		N/A
	Symbol 14 with full details in the documentation		N/A
5.1.4	Fuses		N/A
	Operator replaceable fuse marking (see also 5.4.5).....:	No replaceable fuses	—
5.1.5	TERMINALS, connections and operating devices	No such parts	N/A
5.1.5.1	General		—
	Where necessary for safety, indication of purpose of TERMINALS, connectors, controls and indicators marked		N/A
	If insufficient space, symbol 14 used		N/A
	Push-buttons and actuators of emergency stop devices and indicators:		—
	– used only to indicate a warning of danger; or		N/A
	– the need for urgent action		N/A
	– coloured red		N/A
	– coded as specified in IEC 60073		N/A
	Supplementary means of coding provided, if meaning of colour relates (see IEC 60073):	No meaning of colour relates	—
	– to safety of persons; or		N/A
	– safety of the environment		N/A
5.1.5.2	TERMINALS		—
	MAINS supply TERMINAL identified		N/A
	Other TERMINAL marking:		—
	a) FUNCTIONAL EARTH TERMINALS (symbol 5 used)		N/A
	b) PROTECTIVE CONDUCTOR TERMINALS:		—
	Symbol 6 is placed close to or on the TERMINAL; or		N/A
	Part of appliance inlet		N/A
	c) TERMINALS of control circuits (symbol 7 used)		N/A
	d) HAZARDOUS LIVE TERMINALS supplied from the interior		N/A
	Standard MAINS socket outlet; or		N/A
	RATINGS marked; or		N/A
	Symbol 14 used		N/A
5.1.6	Switches and circuit breakers	No such parts	N/A

IEC/EN 61010-1			
Clause	Requirement + Test	Result - Remark	Verdict
	If disconnecting device, off position clearly marked		N/A
	If push-button used as power supply switch:	Only a push-button used as ON/OFF key for main unit, which is powered by secondary circuit or internal battery	—
	– symbol 9 and 15 used for on-position		N/A
	– symbol 10 and 16 used for off-position		N/A
	– pair of symbols 9, 15 and 10, 16 close together		N/A
5.1.7	Equipment protected by DOUBLE INSULATION or REINFORCED INSULATION		P
	Protected throughout (symbol 11 used)		P
	Only partially protected (symbol 11 not used)		N/A
5.1.8	Field-wiring TERMINAL boxes	No Field-wiring TERMINAL boxes	N/A
	If TERMINAL or ENCLOSURE exceeds 60 °C:	(see Form A.26A)	—
	Cable temperature RATING marked .....		—
	Marking visible before and during connection or beside TERMINAL		N/A
5.2	Warning markings	No warning markings	N/A
	Visible when ready for NORMAL USE		N/A
	Are near or on applicable parts		N/A
	Symbols and text correct dimensions and colour:		—
	a) symbols min 2,75 mm and text 1,5 mm high and contrasting in colour with background		N/A
	b) symbols and text moulded, stamped or engraved in material min. 2,0 mm high and		N/A
	0,5 mm depth or raised if not contrasting in colour		N/A
	If necessary marked with symbol 14		N/A
	Statement to isolate or disconnect if access by using a tool to HAZARDOUS LIVE parts is permitted		N/A
5.3	Durability of markings	(see Form A.3)	P
	The required markings remain clear and legible in NORMAL USE	(see Form A.3)	P
5.4	Documentation		P
5.4.1	General		P
	Equipment is accompanied by documentation for safety purposes for OPERATOR or RESPONSIBLE BODY		P
	Safety documentation for service personnel authorized by the manufacturer		P
	Documentation necessary for safe operation is provided in printed media or		P

TRF No. TRF No. IEC61010\_1J\_M1

STC (Dongguan) Company Limited

68 Fumin Nan Road, Dalang, Dongguan, China. (Zip Code: 523770)

Tel: (86 769)81119888 Fax:(86 769)81116222 Email: dgstc@stc.group Homepage: www.stc.group

IEC/EN 61010-1			
Clause	Requirement + Test	Result - Remark	Verdict
	in electronic media if available at any time		N/A
	Documentation includes:		—
	a) intended use	See user manual	P
	b) technical specification	See user manual	P
	c) name and address of manufacturer or supplier	See user manual	P
	d) information specified in 5.4.2 to 5.4.6		P
	e) information to mitigate residual RISK (see also subclause 17)		N/A
	f) accessories for safe operation of the equipment specified	Adapter	P
	g) guidance provided to check correct function of the equipment, if incorrect reading may cause a HAZARD from harmful or corrosive substances of HAZARDOUS live parts		N/A
	h) instructions for lifting and carrying	No for lifting or carrying	N/A
	Warning statements and a clear explanation of warning symbols:	No warning symbols	—
	– provided in the documentation; or		N/A
	– information is marked on the equipment		N/A
5.4.2	Equipment ratings		P
	Documentation includes:		—
	a) Supply voltage or voltage range..... :	Power Adapter: 100-240Vac	—
	Frequency or frequency range .....	50/60Hz	—
	Power or current rating..... :	0.3A	—
	b) Description of all input and output connections in accordance to 6.6.1 a)	See the manual	P
	c) RATING of insulation of external circuits in accordance to 6.6.1 b)		N/A
	d) Statement of the range of environmental conditions (see 1.4)	See the manual	P
	e) Degree of protection (IEC 60529)		N/A
	f) If impact rating less than 5 J:		—
	IK code in accordance to IEC 62262 marked; or		N/A
	symbol 14 of table 1 marked, with		N/A
	RATED energy level and test method stated		N/A
5.4.3	Equipment installation	No such situations	N/A
	Documentation includes instructions for:		—
	a) assembly, location and mounting requirements		N/A
	b) protective earthing	No protective earthing	N/A

IEC/EN 61010-1			
Clause	Requirement + Test	Result - Remark	Verdict
	c) connections to supply		N/A
	d) PERMANENTLY CONNECTED EQUIPMENT:		—
	1) Supply wiring requirements		N/A
	2) If external switch or circuit-breaker, requirements and location recommendation		N/A
	e) ventilation requirements		N/A
	f) special services (e. g. air, cooling liquid)		N/A
	g) instructions relating to sound level		N/A
5.4.4	Equipment operation	See user manual	P
	Instructions for use include:		—
	a) identification and description of operating controls	See user manual	P
	b) positioning for disconnection		N/A
	c) instructions for interconnection		P
	d) specification of intermittent operation limits		N/A
	e) explanation of symbols used	See user manual	P
	f) replacement of consumable materials		N/A
	g) cleaning and decontamination		N/A
	h) listing of any poisonous or injurious gases and quantities		N/A
	i) RISK reduction procedures relating to flammable liquids (see 9.5)		N/A
	j) RISK reduction procedures relating burn from surfaces permitted to exceed limits of 10.1		N/A
	Additional precautions for IEC 60950 conforming equipment in regard to moistures and liquids		N/A
	A statement about protection impairment if used in a manner not specified by the manufacturer		N/A
5.4.5	Equipment maintenance and Service	See user manual	P
	Instructions for RESPONSIBLE BODY include:		—
	Instructions sufficient in detail permitting safe maintenance and inspection and continued safety:		—
	Instruction against the use of detachable MAINS supply cord with inadequate rating	No Mains supply cord	N/A
	Specific battery type of user replaceable batteries	No replaceable batteries	N/A
	Any manufacturer specified parts	Adapter	P
	Rating and characteristics of fuses	No replaceable fuses	N/A
	Instructions include following subjects permitting safe servicing and continued safety:		—

IEC/EN 61010-1			
Clause	Requirement + Test	Result - Remark	Verdict
	a) product specific RISKS may affect service personnel		N/A
	b) protective measures for these RISKS		N/A
	c) verification of the safe state after repair		N/A
5.4.6	Integration into systems or effects resulting from special conditions		N/A
	Aspects described in documentation		N/A

6	PROTECTION AGAINST ELECTRIC SHOCK		P
6.1	General	(see Form A.14 and A.15)	P
6.1.1	Requirements		P
	Protection against electric shock maintained in NORMAL CONDITION and SINGLE FAULT CONDITION		P
	ACCESSIBLE parts not HAZARDOUS LIVE		P
	Voltage, current, charge or energy below the limits in NORMAL CONDITION and in SINGLE FAULT CONDITION between:		—
	ACCESSIBLE parts and earth		P
	two ACCESSIBLE parts on same piece of the equipment within a distance of 1,8 m		P
	Conformity is checked by the determination of 6.2 and 6.3 followed by the tests of 6.4 to 6.11		P
6.1.2	Exceptions		N/A
	Following HAZARDOUS LIVE parts may be ACCESSIBLE to an OPERATOR:		—
	a) parts of lamps and lamp sockets after lamp removal		N/A
	b) parts to be replaced by OPERATOR only by the use of tool and warning marking		N/A
	Those parts not HAZARDOUS LIVE 10 s after interruption of supply	(see Form A.5 )	N/A
	Capacitance test if charge is received from internal capacitor	(see Form A.4 and A.5)	N/A
6.2	Determination of ACCESSIBLE parts	(see Form A.4)	P
6.2.1	General		P
	Unless obviously determination of ACCESSIBLE parts as specified in 6.2.2 to 6.2.4		P
6.2.2	Examination	By visual	N/A
	– with jointed test finger (as specified B.2)		N/A
	– with rigid test finger (as specified B.1) and a force of 10 N		N/A

IEC/EN 61010-1			
Clause	Requirement + Test	Result - Remark	Verdict
6.2.3	Openings above parts that are HAZARDOUS LIVE	No such parts	N/A
	– test pin with length of 100 mm and 4 mm in diameter applied		N/A
6.2.4	Openings for pre-set controls		N/A
	– test pin with length of 100 mm and 3 mm in diameter applied		N/A
6.3	Limit values for ACCESSIBLE parts		P
6.3.1	Levels in NORMAL CONDITION	(see Form A.5)	—
	a) Voltage limits less than 33 V r.m.s. and 46,7 V peak or 70 V d.c.		P
	for WET LOCATIONS voltage limits less than 16 V r.m.s. and 22,6 V peak or 35 V d.c.	No such conditions	N/A
	Voltages are not HAZARDOUS LIVE the levels of:		—
	b) Current less than 0,5 mA r.m.s. for sinusoidal, 0,7 mA peak non-sinusoidal or mixed frequencies or 2 mA d.c. when measured with measuring circuit A.1 or A.2 if less than 100 Hz		P
	for WET LOCATIONS measuring circuit A.4 used		N/A
	70 mA r.m.s. when measured with circuit A.3 for higher frequencies		N/A
	or		—
	c) Levels of capacitive charge or energy less:		—
	1) 45 µC for voltages up to 15 kV peak or d.c. or line A of Figure 3		N/A
	2) 350 mJ stored energy for voltages above 15 kV peak or d.c.		N/A
6.3.2	Levels in SINGLE FAULT CONDITION	(see Form A.6)	—
	a) Voltage limits less than 55 V r.m.s. and 78 V peak or 140 V d.c.		P
	for WET LOCATIONS voltage limits less than 33 V r.m.s. and 46,7 V peak or 70 V d.c.		N/A
	Voltages are not HAZARDOUS LIVE the levels of:		—
	b) Current less than 3,5 mA r.m.s. for sinusoidal, 5 mA peak non-sinusoidal or mixed frequencies or 15 mA d.c. when measured with measuring circuit A.1 or A.2 if less than 100 Hz		P
	for WET LOCATIONS measuring circuit A.4 used		N/A
	500 mA r.m.s. when measured with circuit A.3 for higher frequencies		N/A
	or		—
	c) Levels of capacitive charge or energy less line B of Figure 3		N/A



IEC/EN 61010-1			
Clause	Requirement + Test	Result - Remark	Verdict
6.4	Primary means of protection		P
6.4.1	ACCESSIBLE parts prevented from being HAZARDOUS LIVE by one or more of following means:		—
	a) ENCLOSURES or PROTECTIVE BARRIERS (see 6.4.2)		P
	b) BASIC INSULATION (see 6.4.3)		P
	c) Impedance (see 6.4.4)		N/A
6.4.2	ENCLOSURES or PROTECTIVE BARRIERS	(see Form A.15 and A.16)	—
	– meet rigidity requirements of 8.1		P
	– meet requirements for BASIC INSULATION, if protection is provided by insulation		P
	– meet requirements of 6.7 for CREEPAGE and – CLEARANCES between ACCESSIBLE parts and – HAZARDOUS live parts, if protection is provided by – limited access		P
6.4.3	BASIC INSULATION	(see Form A.15 and A.16)	—
	– meet CLEARANCE, CREEPAGE DISTANCE and solid – insulation requirements of 6.7		P
6.4.4	Impedance	(see Form A.12 and A.15)	—
	Impedance used as primary means of protection meets all of following requirements:		—
	a) limits current or voltage to level of 6.3.2		N/A
	b) RATED for maximum WORKING VOLTAGE and the amount of power it will dissipate		N/A
	c) CLEARANCE, CREEPAGE DISTANCE between terminations of the impedance meet requirements of BASIC INSULATION of 6.7		N/A
6.5	Additional means of protection in case of SINGLE FAULT CONDITION		P
6.5.1	ACCESSIBLE parts are prevented from becoming HAZARDOUS live by the primary means of protection and supplemented by one of:		—
	a) PROTECTIVE BONDING (see 6.5.2)	Evaluated as part of adapter See EN 60950-1 test report for details	P
	b) SUPPLEMENTARY INSULATION (see 6.5.3)		N/A
	c) automatic disconnection of the supply (see 6.5.5)		N/A
	d) current- or voltage-limiting device (see 6.5.6)		N/A
	Alternatively one of the single means of protection is used:		—
	e) REINFORCED INSULATION (see 6.5.3)		N/A
	f) PROTECTIVE IMPEDANCE (see 6.5.4)		N/A

IEC/EN 61010-1			
Clause	Requirement + Test	Result - Remark	Verdict
6.5.2	PROTECTIVE BONDING	No protective bonding	N/A
6.5.2.1	ACCESSIBLE conductive parts, may become HAZARDOUS LIVE in SINGLE FAULT CONDITION:		—
	Bonded to the PROTECTIVE CONDUCTOR TERMINAL; or		N/A
	Separated by conductive screen or barrier bonded to PROTECTIVE CONDUCTOR TERMINAL		N/A
6.5.2.2	Integrity of PROTECTIVE BONDING		—
	a) PROTECTIVE BONDING consists of directly connected structural parts or discrete conductors or both; and withstands thermal and dynamic stresses		N/A
	b) Soldered connections:		—
	Independently secured against loosening		N/A
	Not used for other purposes		N/A
	c) Screw connections are secured		N/A
	d) PROTECTIVE BONDING not interrupted; or		N/A
	exempted as removable part carries MAINS SUPPLY input connection		N/A
	e) Any movable PROTECTIVE BONDING connection specifically designed, and meets 6.5.2.4		N/A
	f) No external metal braid of cables used (not regarded as PROTECTIVE BONDING)		N/A
	g) IF MAINS SUPPLY passes through:		—
	Means provided for passing protective conductor;		N/A
	Impedance meets 6.5.2.4		N/A
	h) Protective conductors bare or insulated, if insulated, green/yellow		N/A
	Exceptions:		—
	1) earthing braids;		N/A
	2) internal protective conductors etc.;		N/A
	Green/yellow not used for other purposes		N/A
	TERMINAL suitable for connection of a PROTECTIVE CONDUCTOR, and meets 6.5.2.3		N/A
6.5.2.3	PROTECTIVE CONDUCTOR TERMINAL		—
	a) Contact surfaces are metal		N/A
	b) Appliance inlet used		N/A
	c) For rewirable cords and PERMANENTLY CONNECTED EQUIPMENT, PROTECTIVE CONDUCTOR TERMINAL is close to MAINS supply TERMINALS		N/A

IEC/EN 61010-1			
Clause	Requirement + Test	Result - Remark	Verdict
	d) If no MAINS supply is required, any PROTECTIVE CONDUCTOR TERMINAL:		—
	Is near terminals of circuit for which protective earthing is necessary		N/A
	External if other terminals external		N/A
	e) Equivalent current-carrying capacity to MAINS supply TERMINALS	(see Form A.7)	N/A
	f) If plug-in, makes first and breaks last		N/A
	g) If also used for other bonding purposes, PROTECTIVE CONDUCTOR:		—
	Applied first;		N/A
	Secured independently;		N/A
	Unlikely to be removed by servicing		N/A
	h) PROTECTIVE CONDUCTOR of measuring circuit:		—
	1) Current RATING equivalent to measuring circuit TERMINAL;		N/A
	2) PROTECTIVE BONDING: not interrupted by any switch or interrupting device		N/A
	i) FUNCTIONAL EARTH TERMINALS allow independent connection	No functional earths	N/A
	j) If a binding screw used for PROTECTIVE CONDUCTOR TERMINAL:	No screw used	—
	Suitable size for bond wire		N/A
	Not smaller than M 4		N/A
	At least 3 turns of screw engaged		N/A
	Passes tightening torque test	(see Form A.8)	N/A
	k) Contact pressure not capable being reduced by deformation of materials		N/A
6.5.2.4	Impedance of PROTECTIVE BONDING of plug-connected equipment	Not Class I equipment	—
	Impedance between PROTECTIVE CONDUCTOR TERMINAL and each ACCESSIBLE part where PROTECTIVE BONDING is specified, is:		—
	– less than 0,1 Ohm; or		N/A
	– less than 0,2 Ohm if equipment is provided with non-detachable cord		N/A
6.5.2.5	Bonding impedance of PERMANENTLY CONNECTED EQUIPMENT		—
6.5.2.6	Transformer PROTECTIVE BONDING screen		—
	Transformer provided with screen for PROTECTIVE BONDING:		—

IEC/EN 61010-1			
Clause	Requirement + Test	Result - Remark	Verdict
	screen bonding consists of directly connected structural parts or discrete conductors or both; and withstands thermal and dynamic stresses (see 6.5.2.2 a )		N/A
	screen bonding with soldered connection (see 6.5.2.2 b ) is:		N/A
	– Independently secured against loosening		N/A
	– Not used for other purposes		N/A
6.5.3	SUPPLEMENTARY and REINFORCED INSULATION	Evaluated as part of adapter See EN 60950-1 test report for details	P
	Meet CLEARANCE, CREEPAGE DISTANCE and solid insulation requirements of 6.7	Complied with EN 60950-1	N/A
6.5.4	PROTECTIVE IMPEDANCE	No such conditions	N/A
	Limits current or voltage to level of 6.3.1 in NORMAL and to level of 6.3.2 in SINGLE FAULT CONDITION		N/A
	CLEARANCE, CREEPAGE DISTANCE between terminations of the impedance meet requirements of DOUBLE or REINFORCED INSULATION of 6.7		N/A
	The PROTECTIVE IMPEDANCE consists of one or more of the following:		—
	a) appropriate single component suitable for safety and reliability for protection, it is:		—
	1) RATED twice the maximum WORKING VOLTAGE		N/A
	2) resistor RATED for twice the power dissipation for maximum WORKING VOLTAGE		N/A
	b) combination of components		N/A
	Single electronic device not used as PROTECTIVE IMPEDANCE		N/A
6.5.5	Automatic disconnection of the supply	No such conditions	N/A
	a) RATED to disconnect the load within time specified in Figure 2		N/A
	b) RATED for the maximum load conditions of the equipment		N/A
6.5.6	Current- or voltage-limiting devices	Evaluated as part of adapter See EN 60950-1 test report for details	P
	Device complies with all of:		—
	a) RATED to limit the current or voltage to the level of 6.3.2		P
	b) RATED for the maximum WORKING VOLTAGE; and		P
	RATED for the maximum operational current if applicable		P

IEC/EN 61010-1			
Clause	Requirement + Test	Result - Remark	Verdict
	c) CLEARANCE, CREEPAGE DISTANCE between terminations of the impedance meet requirements of SUPPLEMENTARY INSULATION of 6.7		N/A
6.6	Connections to external circuits		P
6.6.1	Connections do not cause ACCESSIBLE parts of the following to become HAZARDOUS LIVE in NORMAL CONDITION or SINGLE FAULT CONDITION:		—
	– the external circuits		N/A
	– the equipment		N/A
	Protection achieved by separation of circuits; or		N/A
	short circuit of separation does not cause a HAZARD		N/A
	Instructions or markings for each terminal include:		—
	a) RATED conditions for TERMINAL		N/A
	b) Required RATING of external circuit insulation		N/A
6.6.2	TERMINALS for external circuits		N/A
	TERMINALS which receive a charge from an internal capacitor are not HAZARDOUS LIVE after 10 s of interrupting supply connection		N/A
6.6.3	Circuits with terminals which are HAZARDOUS LIVE	No such conditions	N/A
	These circuits are:		—
	Not connected to ACCESSIBLE conductive parts; or		N/A
	Connected to ACCESSIBLE conductive parts, but are not MAINS CIRCUITS and have one TERMINAL contact at earth potential		N/A
	No ACCESSIBLE conductive parts are HAZARDOUS LIVE		N/A
6.6.4	ACCESSIBLE terminals for stranded conductors	No such conditions	N/A
	No RISK of accidental contact because:		—
	– Located or shielded		N/A
	– Self-evident or marked whether or not connected to ACCESSIBLE conductive parts		N/A
	ACCESSIBLE TERMINALS will not work loose		N/A
6.7	Insulation requirements		P
6.7.1	The nature of insulation		—
6.7.1.1	Insulation between ACCESSIBLE parts or between separate circuits consist of CLEARANCES, CREEPAGE DISTANCES and solid insulation if provided as protection against a HAZARD	Evaluated as part of adapter See EN 60950-1 test report for details	P
6.7.1.2	CLEARANCES		—
	Required CLEARANCES reflecting factors of 6.7.1.1	Evaluated as part of adapter See EN 60950-1 test report for details	P

IEC/EN 61010-1			
Clause	Requirement + Test	Result - Remark	Verdict
	Equipment rated for operating altitude greater than 2000 m correction factor of Table 3 of 61010-1 applied		N/A
6.7.1.3	CREEPAGE DISTANCES	Evaluated as part of adapter See EN 60950-1 test report for details	—
	Required CREEPAGE DISTANCES reflecting factors of 6.7.1.1 a) to d)	(see Form A.14 and A.15)	P
	CTI material group reflected by requirements		P
	CTI test performed		N/A
6.7.1.4	Solid insulation		—
	Required solid insulation reflecting factors of 6.7.1.1 a) to d)	(see Form A.14 and A.15)	P
6.7.1.5	Requirements for insulation according to type of circuit	(see Form A.14 and A.15)	—
	a) 6.7.2 MAINS circuits of OVERVOLTAGE CATEGORY II up to nominal supply voltage of 300 V		P
	b) 6.7.3 secondary circuits separated from circuits defined in a) by transformer		P
	c) K.1 MAINS circuits of OVERVOLTAGE CATEGORY III and IV or OVERVOLTAGE CATEGORY II over 300 V		N/A
	d) K.2 secondary circuits separated from circuits defined in c) by transformer		N/A
	e) K.3 circuits having one or more of:		—
	1) maximum TRANSIENT OVERVOLTAGE is limited to known level below the level of MAINS CIRCUIT		N/A
	2) maximum TRANSIENT OVERVOLTAGE above the level of MAINS CIRCUIT		N/A
	3) WORKING VOLTAGE is the sum of more than one circuit or a mixed voltage		P
	4) WORKING VOLTAGE includes recurring peak voltage, may include non-sinusoidal or non-periodic waveform		N/A
	5) WORKING VOLTAGE with a frequency above 30 kHz		N/A
6.7.2	Insulation for MAINS CIRCUITS of OVERVOLTAGE CATEGORY II with a nominal supply voltage up to 300 V		P
6.7.2.1	CLEARANCES and CREEPAGE DISTANCES	(see Form A.14 and A.15)	—
	Values for MAINS CIRCUITS of Table 4 are met		P
	Coatings to achieve reduction to POLLUTION DEGREE 1 comply with requirements of Annex H		N/A
6.7.2.2	Solid insulation		—

IEC/EN 61010-1			
Clause	Requirement + Test	Result - Remark	Verdict
6.7.2.2.1	Withstands electrical and mechanical stresses in normal use and all RATED environmental conditions of 1.4		P
	Equipment passed voltage tests of 6.8.3 with values of Table 5	(see Form A.18)	P
	Complies as applicable:		—
	a) ENCLOSURE or PROTECTIVE BARRIER of Clause 8		P
	b) moulded and potted parts requirements of 6.7.2.2.2		N/A
	c) inner layers of printed wiring boards requirements of 6.7.2.2.3		N/A
	d) thin-film insulation requirements of 6.7.2.2.4		P
6.7.2.2.2	Moulded and potted parts		—
	Conductors between same two layers are separated by at least 0,4 mm after moulding is completed		N/A
6.7.2.2.3	Inner insulating layers of printed wiring boards		—
	Separated by at least 0,4 mm between same two layers		N/A
	REINFORCED INSULATION have adequate electric strength; one of following methods used:		—
	a) thickness of insulation is at least 0,4 mm		N/A
	b) insulation is assembled of minimum two separate layers, each RATED for test voltage of Table 5 for BASIC INSULATION		N/A
	c) insulation is assembled of minimum two separate layers, where the combination is rated for test voltage of Table 5 for REINFORCED INSULATION		N/A
6.7.2.2.4	Thin-film insulation		—
	Conductors between same two layers are separated by applicable CLEARANCES and CREEPAGE DISTANCE of 6.7.2.1		N/A
	REINFORCED INSULATION have adequate electric strength; one of following methods used:		—
	a) thickness through the insulation at least 0,4 mm		N/A
	b) insulation is assembled of min two separate layers, each RATED for test voltage of Table 5 for BASIC INSULATION		N/A
	c) insulation is assembled of min three separate layers, where the combination of two layers passed voltage tests of 6.8.3 with values of Table 5 for REINFORCED INSULATION		N/A
6.7.3	Insulation for secondary circuits derived from MAINS CIRCUITS of OVERVOLTAGE CATEGORY II up to 300 V		P

IEC/EN 61010-1			
Clause	Requirement + Test	Result - Remark	Verdict
6.7.3.1	Secondary circuits where separation from MAINS CIRCUITS is achieved by a transformer providing:		—
	– REINFORCED INSULATION	Evaluated as part of adapter See EN 60950-1 test report for details	P
	– DOUBLE INSULATION		N/A
	– screen connected to the PROTECTIVE CONDUCTOR TERMINAL		N/A
6.7.3.2	CLEARANCES		—
	a) meet the values of Table 6 for BASIC INSULATION and SUPPLEMENTARY INSULATION; or		N/A
	twice the values of Table 6 for REINFORCED INSULATION		N/A
	or		—
	b) pass the voltage tests of 6.8 with values of Table 6;	(see Form A.18)	—
	with following adjustments:		—
	1) values for reinforced insulation are 1,6 times the values for basic insulation		P
	2) if operating altitude is greater than 2000 m values of CLEARANCES multiplied with factor of Table 3	Less than 2000m	N/A
	3) minimum CLEARANCE is 0,2 mm for POLLUTION DEGREE 2 and 0,8 mm for POLLUTION DEGREE 3		P
6.7.3.3	CREEPAGE DISTANCES		—
	Based on WORKING VOLTAGE meets the values of Table 7 for BASIC and SUPPLEMENTARY INSULATION		P
	Values for REINFORCED INSULATION are twice the values of BASIC INSULATION		P
	Coatings to achieve reduction to POLLUTION DEGREE 1 comply with requirements of Annex H		N/A
6.7.3.4	Solid insulation		—
6.7.3.4.1	Withstands electrical and mechanical stresses in normal use and all RATED environmental conditions of 1.4		—
	a) Equipment passed voltage test of 6.8.3.1 for 5 s with VALUES of Table 6 for BASIC and SUPPLEMENTARY INSULATION		N/A
	values for REINFORCED INSULATION are 1,6 times the values of BASIC INSULATION		N/A
	b) if WORKING VOLTAGE exceeds 300 V, equipment passed voltage test of 6.8.3.1 for 1 min with a test voltage of 1,5 times working voltage for BASIC or SUPPLEMENTARY INSULATION	(see Form A.18)	N/A



IEC/EN 61010-1			
Clause	Requirement + Test	Result - Remark	Verdict
	value for REINFORCED INSULATION are twice the WORKING VOLTAGE		N/A
	Complies as applicable:		—
	1) ENCLOSURE or PROTECTIVE BARRIER of Clause 8		N/A
	2) moulded and potted parts requirements of 6.7.3.4.2		N/A
	3) inner layers of printed wiring boards requirements of 6.7.3.4.3		N/A
	4) thin-film insulation requirements of 6.7.3.4.4		N/A
6.7.3.4.2	Moulded and potted parts		—
	Conductors between same two layers are separated by applicable distances of Table 8		N/A
6.7.3.4.3	Inner insulation layers of printed wiring boards		—
	Separated by at least by applicable distances of Table 8 between same two layers		N/A
	REINFORCED INSULATION have adequate electric strength; one of following methods used:		—
	a) thickness at least applicable distance of Table 8		N/A
	b) insulation is assembled of minimum two separate layers, each RATED for test voltage of Table 6 for BASIC INSULATION		N/A
	c) insulation is assembled of min two separate layers, where the combination is RATED for 1,6 times the test voltage of Table 6		N/A
6.7.3.4.4	Thin-film insulation		—
	Conductors between same two layers are separated by applicable CLEARANCES and CREEPAGE DISTANCE of 6.7.3.2 and 6.7.3.3		N/A
	REINFORCED INSULATION have adequate electric strength; one of following methods used:		—
	a) thickness at least applicable distance of Table 8		N/A
	b) insulation is assembled of min. two separate layers, each RATED for test voltage of Table 6 for BASIC INSULATION		N/A
	c) insulation is assembled of min. three separate layers, where the combination of two layers passed voltage tests with 1,6 time values of Table 6:	(see Form A.18)	—
	a.c. test of 6.8.3.1; or		N/A
	d.c. test of 6.8.3.2 for circuits stressed only by d.c. voltages		N/A
6.8	Procedure for dielectric strength tests	(see Form A.14 and A.18)	P

IEC/EN 61010-1			
Clause	Requirement + Test	Result - Remark	Verdict
6.9	Constructional requirements for protection against electric shock	Evaluated as part of adapter See EN 60950-1 test report for details	P
6.9.1	If a failure could cause a HAZARD:		—
	a) security of wiring connections		N/A
	b) screws securing removable covers		N/A
	c) accidental loosening		N/A
	d) CLEARANCES and CREEPAGE DISTANCES not reduced below the values of basic insulation by loosening of parts or wires		N/A
6.9.2	Insulating materials		P
	Material not to be used for safety relevant insulation:		—
	a) easily damaged materials not used		P
	b) non-impregnated hygroscopic materials not used		P
6.9.3	Colour coding	No such parts	N/A
	Green-and-yellow insulation shall not be used except:		—
	a) protective earth conductors;		N/A
	b) PROTECTIVE BONDING conductors;		N/A
	c) potential equalization conductors;		N/A
	d) functional earth conductors		N/A
6.10	Connection to MAINS supply source and connections between parts of equipment		P
6.10.1	MAINS supply cords	No mains supply cords	—
	RATED for maximum equipment current (see 5.1.3 c)		N/A
	Cable complies with IEC 60227 or IEC 60245		N/A
	Heat-resistant if likely to contact hot parts		N/A
	Temperature RATING (cord and inlet) .....		—
	Green/yellow used only for connection to PROTECTIVE CONDUCTOR TERMINALS		N/A
	Detachable cords with IEC 60320 MAINS connectors:		—
	Conform to IEC 60799; or		N/A
	Have the current RATING of the MAINS connector		N/A
6.10.2	Fitting of non-detachable MAINS supply cords		—
6.10.2.1	Cord entry		—
	a) inlet or bushing with a smoothly rounded opening; or		N/A
	b) insulated cord guard protruding >5 D (diameter)		N/A
6.10.2.2	Cord anchorage		—
	Protective earth conductor is the last to take the strain		N/A

TRF No. TRF No. IEC61010\_1J\_M1

**STC (Dongguan) Company Limited**

68 Fumin Nan Road, Dalang, Dongguan, China. (Zip Code: 523770)

Tel: (86 769)81119888 Fax:(86 769)81116222 Email: dgstc@stc.group Homepage: www.stc.group

IEC/EN 61010-1			
Clause	Requirement + Test	Result - Remark	Verdict
	a) cord is not clamped by direct pressure from a screw		N/A
	b) knots are not used		N/A
	c) cannot push the cord into the equipment to cause a HAZARD		N/A
	d) no failure of cord insulation in anchorage with metal parts		N/A
	e) not to be loosened without a tool		N/A
	f) cord replacement does not cause a HAZARD and method of strain relief is clear		N/A
	Push-pull and or torque test		N/A
6.10.3	Plugs and connectors	See EN 60950-1 test report	P
	MAINS supply plugs, connectors etc., conform with relevant specifications		P
	If equipment supplied at voltages below 6.3.2.a) or from a sole source:		—
	Plugs of supply cords do not fit MAINS sockets above rated SUPPLY voltage		P
	MAINS type plugs used only for connection to MAINS supply		P
	Plug pins which receive a charge from an internal capacitor	(see Form A.5)	P
	Accessory MAINS socket outlets:		—
	a) marking if accepts a standard MAINS supply plug (see 5.1.3e)		N/A
	b) input has a protective earth conductor if outlet has EARTH TERMINAL CONTACT		N/A
6.11	Disconnection from supply source	Plug used	P
6.11.1	Disconnects all current-carrying conductors	Plug	P
6.11.2	Exceptions		N/A
6.11.3	Requirements according to type of equipment		—
6.11.3.1	PERMANENTLY CONNECTED EQUIPMENT and multi-phase equipment		N/A
	Employs switch or circuit-breaker		N/A
	If switch or circuit-breaker is not part of the equipment, documentation requires:		—
	a) switch or circuit-breaker to be included in building installation		N/A
	b) suitable location easily reached		N/A
	c) marking as disconnecting for the equipment		N/A
6.11.3.2	Single-phase cord-connected equipment		N/A

IEC/EN 61010-1			
Clause	Requirement + Test	Result - Remark	Verdict
	Equipment is provided with one of the following:		—
	a) switch or circuit-breaker		N/A
	b) appliance coupler (disconnectable without tool)		N/A
	c) separable plug (without locking device)		N/A
6.11.4	Disconnecting devices		P
6.11.4.1	Disconnecting device part of equipment		P
	Electrically close to the SUPPLY		P
	Power-consuming components not electrically located between the supply source and the disconnecting device		P
	Except electromagnetic interference suppression circuits permitted to be located on the supply side of the disconnecting device		N/A
6.11.4.2	Switches and circuit-breakers		N/A
	When used as disconnection device:		—
	Meets IEC 60947-1 and IEC 60947-3		N/A
	Marked to indicate function.....:		—
	Not incorporated in MAINS cord		N/A
	Does not interrupt PROTECTIVE EARTH CONDUCTOR		N/A
6.11.4.3	Appliance couplers and plugs		P
	Where an appliance coupler or separable plug is used as the disconnecting device (see 6.11.3.2):		—
	Readily identifiable and easily reached by the operator		P
	Single-phase portable equipment cord length not more than 3 m	Direct plug-in, no cords	N/A
	PROTECTIVE EARTH CONDUCTOR connected first and disconnected last	Class II	N/A

7	PROTECTION AGAINST MECHANICAL HAZARDS		P
7.1	Equipment does not cause a mechanical HAZARD in NORMAL nor in SINGLE FAULT CONDITION		P
	Conformity is checked by 7.2 to 7.7		P
7.2	Sharp edges		P
	Easily touched parts are smooth and rounded		P
	Do not cause injury during NORMAL USE and		P
	Do not cause injury during SINGLE FAULT CONDITION		P
7.3	Moving parts	No moving parts	N/A
7.3.1	HAZARDS from moving parts limited to a tolerable level with the conditions specified in 7.3.2 and 7.3.5		N/A

IEC/EN 61010-1			
Clause	Requirement + Test	Result - Remark	Verdict
	RISK assessment in accordance with 7.3.3 carried out		N/A
7.3.2	Exceptions		N/A
	Access to HAZARDOUS moving parts permitted under following circumstances:		—
	a) obviously intended to operate on parts or materials external of the equipment		N/A
	inadvertent touching of moving parts minimized by equipment design (e.g. guards or handles)		N/A
	b) If OPERATOR access is unavoidable outside NORMAL USE following precautions have been taken:		—
	1) access requires TOOL		N/A
	2) statement about training in the instructions		N/A
	3) warning markings on covers prohibiting access by untrained OPERATORS		N/A
	or symbol 14 with full details in documentation		N/A
7.3.3	RISK assessment for mechanical HAZARDS to body parts		N/A
	RISK is reduced to a tolerable level by protective measures as specified in table 12		N/A
	Minimum protective measures:		—
	A. Low level measures		N/A
	B. Moderate measures		N/A
	C. Stringent measures		N/A
7.3.4	Limitation of force and pressure	(see Form A.20)	N/A
	Following levels are met in NORMAL and SINGLE FAULT CONDITION:		—
	Continuous contact pressure below 50 N / cm <sup>2</sup> with force below 150 N		N/A
	Temporary force below 250 N for an area at least of 3 cm <sup>2</sup> for a maximum duration of 0,75 s		N/A
7.3.5	Gap limitations between moving parts	(see Form A.20)	N/A
7.3.5.1	Access normally allowed		—
	If levels of 7.3.4 exceeded and body part may be inserted minimum gap as specified in table 13 assured in NORMAL and in SINGLE FAULT CONDITION		N/A
7.3.5.2	Access normally prevented		—
	Maximum gap as specified in table 14 assured in NORMAL and in SINGLE FAULT CONDITION		N/A
7.4	Stability	Portable equipment	N/A
	Equipment not secured to building structure is physical stable		N/A

IEC/EN 61010-1			
Clause	Requirement + Test	Result - Remark	Verdict
	Stability maintained after opening of drawers etc. by automatic means, or		N/A
	warning marking requires the application of means		N/A
	Compliance checked by following tests as applicable:		—
	a) 10° tilt test for other than handheld equipment		N/A
	b) multi-directional force test for equipment exceeds height of 1 m and mass of 25 kg		N/A
	c) downward force test for floor-standing equipment		N/A
	d) overload test with 4 times maximum load for castor or support that supports greatest load		N/A
	e) castor or support that supports greatest load removed from equipment		N/A
7.5	Provisions for lifting and carrying		N/A
7.5.1	Equipment more than 18 kg :		—
	Has means for lifting or carrying; or		N/A
	Directions in documentation		N/A
7.5.2	Handles and grips		—
	Handles or grips withstand four times weight		N/A
7.5.3	Lifting devices and supporting parts		—
	RATED for maximum load; or		N/A
	tested with four times maximum static load		N/A
7.6	Wall mounting		N/A
	Mounting brackets withstand four times weight		N/A
7.7	Expelled parts		N/A
	Equipment contains or limits the energy		N/A
	Protection not removable without the aid of a tool		N/A

8	RESISTANCE TO MECHANICAL STRESSES		P
8.1	Equipment does not cause a HAZARD when subjected to mechanical stresses in NORMAL USE		P
	Normal protection level is 5 J		P
	Levels below 5 J but not less than 1 J are acceptable if all of following criteria are met:		—
	a) lower level justified by RISK assessment of manufacturer		N/A
	b) equipment installed in its intended application is not easily touched		N/A
	c) only occasional access during NORMAL USE		N/A

IEC/EN 61010-1			
Clause	Requirement + Test	Result - Remark	Verdict
	d) IK code in accordance to IEC 62262 marked or symbol 14 used with full information in the documentation		N/A
	for non-metallic ENCLOSURES rated below 2 °C ambient temperature value chosen for minimum RATED temperature		N/A
	impact energies between IK values, the IK code marked for nearest lower value		N/A
	Conformity is checked by performing following tests:		—
	1) static test of 8.2.1		P
	2) impact test of 8.2.2 with 5 J except for HAND-HELD EQUIPMENT		P
	if impact energy not selected to 5 J alternate method of IEC 62262 used		N/A
	3) drop test of 8.3.1 or 8.3.2 except for FIXED EQUIPMENT and equipment with mass over 100 kg		P
	Equipment RATED with an impact rating of IK 08 that obviously meets the criteria		P
	After the tests inspection with following results:		—
	– HAZARDOUS LIVE parts above the limits of 6.3.2 not ACCESSIBLE		P
	– insulation pass the voltage tests of 6.8	(see Form A.30)	P
	i) no leaks of corrosive and harmful substances		P
	ii) ENCLOSURE shows no cracks resulting in a HAZARD		P
	iii) CLEARANCES not less than their permitted values		P
	iv) insulation of internal wiring remains undamaged		P
	v) PROTECTIVE BARRIERS not damaged or loosened	No such parts	N/A
	vi) No moving parts exposed, except permitted by 7.3	No such parts	N/A
	vii) no damage which could cause spread of fire		P
8.2	ENCLOSURE rigidity test		P
8.2.1	Static test	(see Form A.21A)	P
	– 30 N with 12 mm rod to each part of ENCLOSURE		P
	– in case of doubt test conducted at maximum RATED ambient temperature		N/A
8.2.2	Impact test	(see Form A.21A)	P
	Impact applied to any part of ENCLOSURE causing a HAZARD if damaged		P
	Impact energy level and corresponding IK code.....:		—
	Non-metallic ENCLOSURES cooled to minimum RATED ambient temperature if below 2 °C		P

TRF No. TRF No. IEC61010\_1J\_M1

STC (Dongguan) Company Limited

68 Fumin Nan Road, Dalang, Dongguan, China. (Zip Code: 523770)

Tel: (86 769)81119888 Fax:(86 769)81116222 Email: dgstc@stc.group Homepage: www.stc.group

IEC/EN 61010-1			
Clause	Requirement + Test	Result - Remark	Verdict
8.3	Drop test	(see Form A.21B)	P
8.3.1	Other than HAND-HELD and DIRECT-PLUG-IN EQUIPMENT		P
	Tests conducted with a drop height or angle of ..... :		—
8.3.2	HAND-HELD and DIRECT-PLUG-IN EQUIPMENT		—
	Non-metallic ENCLOSURES cooled to minimum RATED ambient temperature if below 2 °C		N/A
	Drop test conducted with an height of 1 m		N/A

9	PROTECTION AGAINST THE SPREAD OF FIRE		P
9.1	No spread of fire in NORMAL and SINGLE FAULT CONDITION		P
	MAINS supplied equipment meets requirements of 9.6 additionally		P
	Conformity is checked by minimum one or a combination of the following (see Figure 11):	(see Form A.22)	—
	a) SINGLE FAULT test of 4.4; or	(see Form A.1)	P
	b) Application of 9.2 (eliminating or reducing the sources of ignition); or		P
	c) Application of 9.3 (containment of fire within the equipment)		P
9.2	Eliminating or reducing the sources of ignition within the equipment		P
	a) 1) Limited-energy circuit (see 9.4); or		P
	b) 2) BASIC INSULATION provided for parts of different potential; or	(see Form A.14 and A.18)	N/A
	Bridging the insulation does not cause ignition	(see Form A.1)	N/A
	c) Surface temperature of liquids and parts (see 9.5)	No such parts	N/A
	d) No ignition in circuits designed to produce heat	(see Form A.1)	P
9.3	Containment of the fire within the equipment, should it occur		P
9.3.1	Spread of fire outside equipment reduced to a tolerable level if:		—
	a) Energizing of the equipment is controlled by an OPERATOR held switch		N/A
	b) ENCLOSURE is conform with constructional requirements of 9.3.2; and		N/A
	Requirements of 9.5 are met		N/A
9.3.2	Constructional requirements		—



IEC/EN 61010-1			
Clause	Requirement + Test	Result - Remark	Verdict
	a) Connectors and insulating material have flammability classification V-2 or better	(see TABLE 1 or Form A.23) Evaluated as part of adapter See EN 60950-1 test report for details	P
	b) Insulated wires and cables are flame retardant (VW-1 or equivalent)	(see TABLE 1 or Form A.23) Evaluated as part of adapter See EN 60950-1 test report for details	P
	c) ENCLOSURE meets following requirements:	(see Form A.22)	—
	1) Bottom and sides in arc of 5 ° (see Figure 13) to non-limited circuits (9.4) meets:		—
	i) no openings; or	No openings	P
	ii) perforated as specified in table 16; or		N/A
	iii) metal screen with a mesh; or		N/A
	iv) baffles as specified in Figure 12		N/A
	2) Material of ENCLOSURE and any baffle or flame barrier is made of:		—
	Metal (except magnesium); or		N/A
	Non-metallic materials have flammability classification V-1 or better	(see TABLE 1 or Form A.22) Evaluated as part of adapter See EN 60950-1 test report for details	P
	3) ENCLOSURE and any baffle or flame barrier have adequate rigidity		N/A
9.4	Limited-energy circuit	(see Form A.24)	P
	a) Potential not more than 30 r.m.s. and 42,4 V peak, or 60 V dc		P
	b) Current limited by one of following means:		—
	1) Inherently or by impedance (see table 17); or		P
	2) Overcurrent protective device (see table 18); or		N/A
	3) A regulating network limits also in SINGLE FAULT CONDITION (see table 17)		N/A
	c) Is separated by at least BASIC INSULATION		N/A
	Fuse or a nonadjustable electromechanical device is used		N/A
9.5	Requirements for equipment containing or using flammable liquids		N/A
	Flammable liquids contained in or specified for use with equipment do not cause spread of fire	(see Form A.25)	N/A
	RISK is reduced to a tolerable level:		—

IEC/EN 61010-1			
Clause	Requirement + Test	Result - Remark	Verdict
	a) The temperature of surface or parts in contact with flammable liquids is 25 °C below fire point		N/A
	b) The quantity of liquid is limited		N/A
	c) Flames are contained within the equipment		N/A
	Detailed instructions for RISK-reduction provided		N/A
9.6	Overcurrent protection		P
9.6.1	MAINS supplied equipment protected		P
	BASIC INSULATION between MAINS parts of opposite polarity provided	Evaluated as part of adapter See EN 60950-1 test report for details	P
	Devices not in the protective conductor		P
	Fuses or single-pole circuit-breakers not fitted in neutral (multi-phase)		N/A
9.6.2	PERMANENTLY CONNECTED EQUIPMENT	No permanently connected	N/A
	Overcurrent protection device:		—
	Fitted within the equipment; or		N/A
	Specified in manufacturer's instructions		P
9.6.3	Other equipment		—
	Protection within the equipment		P

10	EQUIPMENT TEMPERATURE LIMITS AND RESISTANCE TO HEAT		P
10.1	Surface temperature limits for protection against burns		P
	Easily touched surfaces within the limits in NORMAL and in SINGLE FAULT CONDITION:	(see Form A.26A)	—
	– at an specified ambient temperature of 40 °C		N/A
	– for equipment rated above 40 °C ambient temperature limits not exceeded raised by the difference to 40 °C	ambient temperature of 45 °C	P
	Heated surfaces necessary for functional reasons exceeding specified values:	No such parts	—
	– Are recognizable as such by appearance or function; or		N/A
	– Are marked with symbol 13		N/A
	– Guards are not removable without tool		N/A
10.2	Temperatures of windings	Evaluated as part of adapter See EN 60950-1 test report for details	P
	Limits not exceeded in:	(see Form A.26B)	—
	NORMAL CONDITION		P

IEC/EN 61010-1			
Clause	Requirement + Test	Result - Remark	Verdict
	SINGLE FAULT CONDITION		P
10.3	Other temperature measurements		P
	Following measurements conducted if applicable:	(see Form A.26A)	—
	a) Value of 60 °C of field-wiring terminal box not exceeded		N/A
	b) Surface of flammable liquids and parts in contact with this liquids		N/A
	c) Surface of non-metallic ENCLOSURES		P
	d) Parts made of insulating material supporting parts connected to MAINS supply		P
	e) Terminals carrying a current more than 0,5 A		N/A
10.4	Conduct of temperature tests		P
10.4.1	Tests conducted under reference test conditions and manufacturer's instructions	(see Form A.26A)	P
10.4.2	Temperature measurement of heating equipment		N/A
	Tests conducted in test corner	(see Form A.26A)	N/A
10.4.3	Equipment intended for installation in a cabinet or wall		N/A
	Equipment built in as specified in installation instructions	(see Form A.26A)	N/A
10.5	Resistance to heat		P
10.5.1	Integrity of CLEARANCE and CREEPAGE DISTANCES	(see Form A.16)	P
10.5.2	Non-metallic ENCLOSURES	(see Form A.27)	P
	Within 10 min after treatment:		—
	Equipment subjected to suitable stresses of 8.2 and 8.3 complying with criteria of 8.1		P
10.5.3	Insulating material	Evaluated as part of adapter See EN 60950-1 test report for details	P
	a) Parts supporting parts connected to MAINS supply		P
	b) TERMINALS carrying a current more than 0,5 A		N/A
	Examination of material data; or		N/A
	in case of doubt:		N/A
	1) Ball pressure test; or	(see Form A.28)	N/A
	2) Vicat softening test of ISO 306	(see Form A.29)	N/A
11	PROTECTION AGAINST HAZARDS FROM FLUIDS		P
11.1	Protection to OPERATORS and surrounding area provided by EQUIPMENT		N/A
	All fluids specified by manufacturer considered		N/A

TRF No. TRF No. IEC61010\_1J\_M1

STC (Dongguan) Company Limited

68 Fumin Nan Road, Dalang, Dongguan, China. (Zip Code: 523770)

Tel: (86 769)81119888 Fax:(86 769)81116222 Email: dgstc@stc.group Homepage: www.stc.group

IEC/EN 61010-1			
Clause	Requirement + Test	Result - Remark	Verdict
11.2	Cleaning	(see Form A.30)	N/A
11.3	Spillage	(see Form A.30)	N/A
11.4	Overflow	(see Form A.30)	N/A
11.5	Battery electrolyte	Evaluated as part of battery See IEC 62133 test report for details	P
	Battery electrolyte leakage presents no HAZARD		P
11.6	Specially protected equipment	(see Form A.30)	N/A
11.7	Fluid pressure and leakage		N/A
11.7.1	Maximum pressure .....	(see Form A.31)	—
	Maximum pressure of any part does not exceed $P_{RATED}$		N/A
11.7.2	Leakage and rupture at high pressure		—
	Fluid-containing parts subjected to hydraulic test if .... :	(see Form A.31)	—
	a) product of pressure and volume > 200 kPa; and		N/A
	b) pressure > 50 kPa		N/A
	Parts of refrigerating systems meets pressure-related requirements of IEC 60335-24 or IEC 60335-2-89		N/A
11.7.3	Leakage from low-pressure parts	(see Form A.32)	N/A
11.7.4	Overpressure safety device		N/A
	Does not operate in NORMAL USE		N/A
	a) Connected as close as possible to parts intended to be protected		N/A
	b) Easy access for inspection, maintenance and repair		N/A
	c) Adjustment only with TOOL		N/A
	d) No discharge towards person		N/A
	e) No HAZARD from deposit of discharged material		N/A
	f) Adequate discharge capacity		N/A
	No shut-off valve between overpressure safety device and protected parts		N/A

12	PROTECTION AGAINST RADIATION, INCLUDING LASER SOURCES, AND AGAINST SONIC AND ULTRASONIC PRESSURE		N/A
12.1	Equipment provides protection		N/A
12.2	Equipment producing ionizing radiation		N/A
12.2.1	Ionizing radiation	(see Form A.33)	N/A
12.2.1.1	Equipment meets the following requirements:		—

IEC/EN 61010-1			
Clause	Requirement + Test	Result - Remark	Verdict
	a) if intended to emit radiation meets requirements of 12.2.1.2; or		N/A
	tested, classified and marked in accordance to IEC 60405		N/A
	b) if only emits stray radiation meets requirements of 12.2.1.3		N/A
12.2.1.2	Equipment intended to emit radiation		—
	Effective dose rate of radiation measured.....:		—
	If dose rate exceeds 5 µSv/h marked with the following:		—
	a) symbol 17 (ISO 361)		N/A
	b) abbreviations of the radionuclides.....:		—
	c) with maximum dose at 1 m; or .....		—
	with dose rate value between 1 µSv/h and 5 µSv/h in m.....:		—
12.2.1.3	Equipment not intended to emit radiation	(see Form A.34)	—
	Limit for unintended stray radiation of 1 µSv/h at any easily reached point kept .....		—
12.2.2	Accelerated electrons		—
	Compartments opened only by the use of a TOOL		N/A
12.3	Ultraviolet (UV) radiation		N/A
	No unintentional HAZARDOUS escape of UV radiation:		—
	– checked by inspection; and		N/A
	– evaluation of RISK assessment documentation		N/A
12.4	Microwave radiation		N/A
	Power density does not exceed 10 W/m <sup>2</sup> .....		N/A
12.5	Sonic and ultrasonic pressure		N/A
12.5.1	Sound level	(see Form A.35)	—
	No HAZARDOUS sound emission		N/A
	Maximum sound pressure level measured and calculated for maximum sound power level as specified in ISO 3746 or ISO 9614-1		N/A
	Instruction describes measures for protection		N/A
12.5.2	Ultrasonic pressure	(see Form A.36)	N/A
	Equipment not intended to emit ultrasound does not exceed limit of 110 dB between 20 kHz and 100 kHz		N/A
	Equipment intended to emit ultrasound:		N/A
	Outside useful beam does not exceed limit of 110 dB between 20 kHz and 100 kHz		N/A
	If inside useful beam above values exceeded:		—

IEC/EN 61010-1			
Clause	Requirement + Test	Result - Remark	Verdict
	Marked with Symbol 14 of table 1		N/A
	and following information in the documentation:		—
	a) dimensions of useful beam		N/A
	b) area where ultrasonic pressure exceed 110 dB		N/A
	c) maximum sound pressure inside beam area		N/A
12.6	Laser sources		N/A
	Equipment meets requirements of IEC 60825-1		N/A

13	PROTECTION AGAINST LIBERATED GASES AND SUBSTANCES, EXPLOSION AND IMPLOSION		P
13.1	Poisonous and injurious gases and substances		N/A
	No poisonous or injurious gases or substances liberated in NORMAL CONDITION		N/A
	Attached data/test reports demonstrate conformity		N/A
13.2	Explosion and implosion		P
13.2.1	Components		N/A
	Components liable to explode:		—
	Pressure release device provided; or		N/A
	Apparatus incorporates operator protection (see also 7.7)		N/A
	Pressure release device:		—
	Discharge without danger		P
	Cannot be obstructed		N/A
13.2.2	Batteries and battery charging	(see Form A.37) Evaluated as part of battery See IEC 62133 test report for details	—
	If explosion or fire HAZARD could occur:		—
	Protection incorporated in the equipment; or		P
	Instructions specify batteries with built-in protection		P
	In case of wrong type of battery used:		—
	No HAZARD; or		P
	Warning by marking and within instructions		N/A
	Equipment with means to charge rechargeable batteries:		—
	Warning against the charging of non-rechargeable batteries; and		N/A
	Type of rechargeable battery indicated; or		P
	Symbol 14 used		N/A

IEC/EN 61010-1			
Clause	Requirement + Test	Result - Remark	Verdict
	Battery compartment design		P
	Single component failure	(see Form A.1)	P
	Polarity reversal test	(see Form A.1)	P
13.2.3	Implosion of cathode ray tubes	No such parts	N/A
	If maximum face dimensions > 160 mm .....		—
	Intrinsically protected and correctly mounted; or		N/A
	ENCLOSURE provides protection:		N/A
	If non-intrinsically protected:		—
	Screen not removable without TOOL		N/A
	If glass screen, not in contact with surface of tube		N/A

14	COMPONENTS AND SUBASSEMBLIES		P
14.1	Where safety is involved, components and subassemblies meet relevant requirements	(see TABLE 1)	P
14.2	Motors	No such parts	N/A
14.2.1	Motor temperatures		N/A
	Does not present a HAZARD when stopped or prevented from starting; or	(see Form A.1; A.26B)	N/A
	Protected by over-temperature or thermal protection device conform with 14.3		N/A
14.2.2	Series excitation motors		N/A
	Connected direct to device, if overspeeding causes a HAZARD		N/A
14.3	Overtemperature protection devices	No such parts	N/A
	Devices operating in a SINGLE FAULT CONDITION	(see Form A.38)	N/A
	a) Reliable function is ensured		N/A
	b) RATED to interrupt maximum current and voltage		N/A
	c) Does not operate in NORMAL USE		N/A
	If self-resetting device used to prevent a HAZARD, protected part requires intervention before restarting		N/A
14.4	Fuse holders	No such parts	N/A
	No access to HAZARDOUS LIVE parts		N/A
14.5	MAINS voltage selecting devices	No such parts	N/A
	Accidental change not possible		N/A
14.6	MAINS transformers tested outside equipment	No such parts	N/A
14.7	Printed circuit boards		P
	Data shows conformity with V-1 of IEC 60695-11-10 or better; or	V-0	P

IEC/EN 61010-1			
Clause	Requirement + Test	Result - Remark	Verdict
	Test shows conformity with V-1 of IEC 60695-11-10 or better	(see Form A.23)	N/A
	Not applicable for printed wiring boards with limited-energy circuits (9.4)		N/A
14.8	Circuits or components used as TRANSIENT OVERVOLTAGE limiting devices		N/A
	Test conducted between each pair of MAINS SUPPLY TERMINALS	(see Form A.41)	N/A
	No HAZARD resulting from rupture or overheating of the component:		—
	– no bridging of safety relevant insulation		N/A
	– no heat to other parts above the self-ignition points		N/A

15	PROTECTION BY INTERLOCKS		N/A
15.1	Interlocks are designed to remove a HAZARD before OPERATOR exposed	No such parts	N/A
15.2	Prevention of reactivation		N/A
15.3	Reliability		N/A
	Single fault unlikely to occur; or		N/A
	Cannot cause a HAZARD		N/A

16	HAZARDS RESULTING FROM APPLICATION		N/A
16.1	REASONABLY FORESEEABLE MISUSE		N/A
	No HAZARDS arising from settings not intended and not described in the instructions		N/A
	Other cases of REASONABLY FORESEEABLE MISUSE addressed by RISK assessment		N/A
16.2	Ergonomic aspects		N/A
	Factors giving rise to a HAZARD the RISK assessment is reflecting those aspects:		—
	a) limitation of body dimensions		N/A
	b) displays and indicators		N/A
	c) accessibility and conventions of controls		N/A
	d) arrangement of TERMINALS		N/A

17	RISK ASSESSMENT		P
	RISK assessment conducted, if HAZARD might arise and not covered by Clauses 6 to 16		P



IEC/EN 61010-1			
Clause	Requirement + Test	Result - Remark	Verdict
	TOLERABLE RISK achieved by iterative documented process covering the following:		—
	a) RISK analysis	See Risk Analysis Report # RA-18-120602-1	P
	Identifies HAZARDS and estimates RISK		P
	b) RISK evaluation	See Risk Assessment Table # RE-18-031502-1 & Risk analysis and management methods # A3-03-000115A section 4.3.3	P
	Plan to judge acceptability of resulting RISK level based on the estimated severity and likelihood of a RISK		P
	c) RISK reduction	See Risk Assessment Table # RE-18-031502-1	P
	Initial RISK reduced by counter measures;		P
	Repeated RISK evaluation without new RISKS introduced	See Risk Assessment Table # RE-18-031502-1 & Risk analysis and management methods # A3-03-000115A chapter 7	P
	RISKS remaining after RISK assessment addressed in instructions to RESPONSIBLE BODY:		—
	Information contained how to mitigate these RISKS		P
	Following principles in methods of RISK reduction applied by manufacturer in given order:		—
	1) RISKS eliminated or reduced as far as possible		P
	2) Protective measures taken for RISKS that cannot be eliminated	No such situations	N/A
	3) User information about residual RISK due to any defect of the protective measures		N/A
	Indication of particular training is required		N/A
	Specification of the need for personal protective equipment		N/A
	Conformity checked by evaluation of the RISK assessment documentation		P

ANNEX F	ROUTINE TESTS		N/A
	Manufacturer 's declaration		N/A

ANNEX H	QUALIFICATION OF CONFORMAL COATINGS FOR PROTECTION AGAINST POLLUTION		N/A
H.1	General		N/A

IEC/EN 61010-1			
Clause	Requirement + Test	Result - Remark	Verdict
	Conformal coatings meet the requirements of Clause H.2 and H.3.		N/A
H.2	Technical properties		N/A
	Technical properties of conformal coatings are suitable for the intended application. In particular:		—
	a) Manufacturer indicate that it is a coating for PWBs;		N/A
	b) RATED operating temperature include the temperature range of the indicated application;		N/A
	c) CTI, insulation resistance and dielectric strength are suitable for the intended application;		N/A
	d) Coating have adequate UV resistance, if it is exposed to sunlight;		N/A
	e) Flammability RATING of the coating is at least the required flammability RATING of the applied PWB.		N/A
H.3	Qualification of coatings	(see Form A.42)	N/A
	Coating complies with the conformity requirements.		N/A
ANNEX K	INSULATION REQUIREMENTS NOT COVERED BY CLAUSE 6.7	(see Form A.15 and A.18)	P

## IEC/EN 61010-1

Clause	Requirement — Test	Result — Remark	Verdict
--------	--------------------	-----------------	---------

4.4	TABLE: Testing in SINGLE FAULT CONDITION – Results			Form A.1	N/A
Test subclause	Fault No.	Fault description	Td 4.4.3 (NOTE)	How was test terminated Comments	Meets 4.4.4
4.4.1 Battery short-circuit	1	Battery short-circuit	1 min	Open circuit voltage: 8.3V; Short circuit current: 4A and turn to zero immediately	P
4.4.1 Reverse polarity of battery	2	Reverse polarity of battery	1 min	Open circuit voltage: 8.3V, no hazards and can't turn on the device	P

NOTE Td = Test duration in hh:mm:ss  
Record dielectric strength test on Form A.18 and temperature tests on Form A.26A and or A.26B.  
Record in the comments column for each test whether carried out during or after SINGLE FAULT CONDITION.

Supplementary information:

IEC/EN 61010-1			
Clause	Requirement — Test	Result — Remark	Verdict

<b>5.1.3c)</b>	<b>TABLE: MAINS supply</b>	<b>Form A.2</b>	<b>P</b>
	Marked rating..... :	100~240 V	—
	Phase..... :	single	—
	Frequency ..... :	50/60 Hz	—
	Current ..... :	0.3 A	—
	Power ..... :	-- W	—
	Power ..... :	-- VA	—

Test No.	Voltage [V]	Frequency [Hz]	Current [A]	Power		Comments
				[W]	[VA]	
--	--	--	--	--	--	Power adapter
1	90	50	0.085	4.7	--	--
2	90	60	0.082	4.7	--	--
3	100	50	0.073	4.1	--	--
4	100	60	0.071	4.1	--	--
5	240	50	0.041	4.0	--	--
6	240	60	0.040	4.0	--	--
7	264	50	0.038	4.0	--	--
8	264	60	0.036	4.0	--	--
--	--	--	--	--	--	Main unit battery
9	8.4	DC	0.046	0.39	--	--

NOTE – Measurements are only required for marked ratings.

Supplementary information:

Adapter:

-Input: 100~240V AC, 50/60Hz, 0.3A

-Output: 8.4Vdc, 500mA

Battery: 7.4V, 450mA

IEC/EN 61010-1					
Clause	Requirement — Test			Result — Remark	Verdict
<b>5.3</b>	<b>TABLE: Durability of markings</b>			<b>Form A.3</b>	<b>P</b>
Marking method (see NOTE)			Agent		
1) Adhesive label			A Water		
2) Ink printed			B Isopropyl alcohol 70%		
3) Laser marked			C (specify agent)		
4) Film-coated (plastic foil control panel)			D (specify agent)		
5) Imprinted on plastic (moulded in)			E (specify agent)		
NOTE – Where applicable include print method, label material, ink or paint type, fixing method, adhesive and surface to which marking is fixed.					
Marking location			Marking method (see above)		
Identification (5.1.2)			Ink label		
MAINS supply (5.1.3)			--		
Fuses (5.1.4)			--		
Terminals and operating devices (5.1.5.2)			--		
Switches and circuit breakers (5.1.6)			--		
Double/reinforced equipment (5.1.7)			--		
Field wiring Terminal boxes (5.1.8)			--		
Warning marking (5.2)			--		
Battery charging (13.2.2)			--		
Method	Test agent	Remains legible	Label loose	Curled edges	Comments
		Verdict	Verdict	Verdict	
Rubbed 30s with a cloth by hand	70% Isopropyl alcohol	Yes	No	No	Remain intact
Supplementary information:					

IEC/EN 61010-1			
Clause	Requirement — Test	Result — Remark	Verdict
<b>6.2</b>	<b>TABLE: List of ACCESSIBLE parts</b>	<b>Form A.4</b>	<b>P</b>
6.1.2	Exceptions		—
6.2	Determination of ACCESSIBLE parts		—
Item	Description	Determination method (NOTE 5)	Exception under 6.1.2 (NOTE 4)
1	Power adapter output	Visual	--
2	Power adapter enclosure	Visual	--
3	Main unit enclosure	Visual	--
4	Main unit tester pin	Visual	--
NOTE 1 – Test fingers and pins are to be applied without force unless a force is specified (see 6.2.2) NOTE 2 – Special consideration should be given to inadequate insulation and high voltage parts (see 6.2) NOTE 3 – Parts are considered to be ACCESSIBLE if they could be touched in the absence of any covering which is not considered to provide suitable insulation (see 6.4). NOTE 4 – Capacitor test may be required (see Form A.5). NOTE 5 – The determination methods are: V = visual; R = rigid test finger; J = jointed test finger; P3 = pin 3 mm diameter; P4 = pin 4 mm diameter.			
Supplementary information:			

IEC/EN 61010-1			
Clause	Requirement — Test	Result — Remark	Verdict

<b>6</b>	<b>TABLE: Values in NORMAL CONDITION</b>										<b>Form A.5</b>	<b>P</b>	
6.1.2	Exceptions							11.2 Cleaning and decontamination			—		
6.3.1	Values in NORMAL CONDITION (see NOTE 1)							11.3 Spillage			—		
6.6.2	Terminals for external circuit							11.4 Overflow			—		
6.10.3	Plugs and connections										—		
Item (see Form A.4)	Voltage			Current				Capacitance		10 s / 5 s test (NOTE)			Comments
	V r.m.s.	V peak	V d.c.	Test circuit A1/A2/A3	mA r.m.s.	mA peak	mA d.c.	μC	mJ	V	μC	mJ	
1	110.0	188.0	--	--	0.1	0.14	--	0.3	--	--	0.3	--	--
2	1.5	6.0	--	--	--	--	--	--	--	--	--	--	--
3	104.0	188.0	--	--	0.01	0.01	--	0.11	--	--	0.11	--	--
4	110.0	194.0	--	--	0.15	0.20	--	0.3	--	--	0.3	--	--

NOTE – A 10 s test is specified in 6.1.2 a) b). A. 5 s test is specified in 6.10.3. The capacitance level versus voltage below the limits given from figure 3 of IEC 61010-1.

Supplementary information:

IEC/EN 61010-1			
Clause	Requirement — Test	Result — Remark	Verdict

6.3.2	TABLE: Values in SINGLE FAULT CONDITION											Form A.6	P
Item  (see Form A.4)	Subclause and fault No. (see Form A.1)	Voltage			Transient (see NOTE)		Current			Capacitance	Comments		
	V r.m.s.	V peak	V d.c.	V	s	Test circuit A1/A2/A3	mA r.m.s.	mA peak	mA d.c.	μF (see NOTE)			
1	1	110.0	188.0	--	--	--	A1	0.1	0.14	--	0.3		
2	1	2.0	2.7	--	--	--	A1	--	--	--	--		
3	1	106.0	190.0	--	--	--	A1	0.01	0.01	--	0.1		
4	1	112.0	192.0	--	--	--	A1	0.15	0.20	--	0.3		
1	2	110.0	188.0	--	--	--	A1	0.1	0.2	--	0.3		
2	2	2.3	2.8	--	--	--	A1	--	--	--	--		
3	2	108.0	194.0	--	--	--	A1	0.08	0.13	--	0.1		
4	2	112.0	192.0	--	--	--	A1	0.17	0.25	--	0.3		

NOTE – Transient voltages must be below the limits given from Figure 2 and the capacitance below the limits from figure 3 of IEC 61010-1.

Supplementary information:



IEC/EN 61010-1			
Clause	Requirement — Test	Result — Remark	Verdict

<b>6.5.2.2</b>	<b>TABLE: Cross-sectional area of bonding conductors</b>	<b>Form A.7</b>	<b>N/A</b>
	Conductor location	CROSS-SECTIONAL AREA [mm <sup>2</sup> ]	Verdict

Supplementary information:

<b>6.5.2.3</b>	<b>TABLE: Tightening torque test</b>	<b>Form A.8</b>	<b>N/A</b>	
	Conductor location	Size of screw	Tightening torque [Nm]	Verdict

Supplementary information:

IEC/EN 61010-1				
Clause	Requirement — Test		Result — Remark	Verdict
<b>6.5.2.4</b>	<b>TABLE: Bonding impedance of plug connected equipment Form A.9</b>			N/A
ACCESSIBLE part under test	Test current [A]	Voltage attained after 1 min [V]	Calculated resistance (Maximum 0,1 or 0,2 Ω) [Ω] (NOTE 1)	Verdict
NOTE 1 – For none-detachable power cord the impedance between protective conductor plug pin of MAINS cord and each ACCESSIBLE part shall not exceed 0,2 Ohm.				
Supplementary information:				
<b>6.5.2.5</b>	<b>TABLE: Bonding impedance of permanently connected equipment Form A.10</b>			N/A
ACCESSIBLE part under test	Test current [A]	Voltage attained after 1 min (maximum 10 V) [V]		Verdict
Supplementary information:				
<b>6.5.2.6</b>	<b>TABLE: Transformer PROTECTIVE BONDING screen Form A.11</b>			N/A
ACCESSIBLE part under test	Test current (see NOTE) [A]	Voltage attained after 1 min (maximum 10 V) [V]	Calculated resistance (maximum 0,1 Ω) [Ω]	Verdict
NOTE – Test current must be twice the value of the overcurrent protection means of the winding. Test is specified in 6.5.2.6 a) or b).				
Supplementary information:				

IEC/EN 61010-1

Clause	Requirement — Test	Result — Remark	Verdict
--------	--------------------	-----------------	---------

<b>6.5.4</b>	<b>TABLE: protective impedance</b>	<b>Form A.12</b>	<b>N/A</b>
--------------	------------------------------------	------------------	------------

A single component								
Component	Location	Measured		Calculated	Rated		Verdict	Comments
		Working voltage [V]	Current [A]	Power dissipation [W]	Working voltage [V]	Power dissipation [W]		

A combination of components		
Component	Location	Comments

NOTE – A PROTECTIVE IMPEDANCE shall not be a single electronic device that employs electron conduction in a vacuum, gas or semiconductor.

Supplementary information:

IEC/EN 61010-1

Clause	Requirement — Test	Result — Remark	Verdict
--------	--------------------	-----------------	---------

<b>6.5.6</b>	<b>TABLE: Current- or voltage-limiting device</b>		<b>Form A.13</b>	N/A
--------------	---	--	------------------	-----

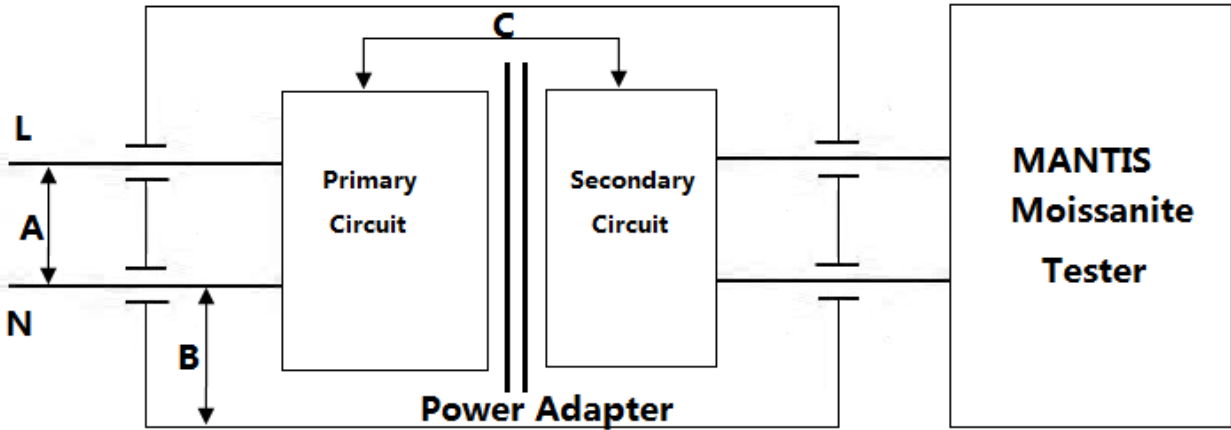
Component	Location	Measured		Rated		Verdict	Comments
		Working voltage [V]	Current [A]	Working voltage [V]	Current [A]		

Supplementary information:

IEC/EN 61010-1

Clause	Requirement — Test	Result — Remark	Verdict
--------	--------------------	-----------------	---------

**6.7**      **TABLE: Insulation requirements- Block diagram of system**      **Form A.14**      **P**



Pollution degree..... :

Overvoltage category..... :

Area	Location	Insulation type (NOTE 1)	WORKING VOLTAGE			Test voltage (NOTE 2) [V]	Comments (NOTE 3)
			RMS [V]	Peak [V]	Frequency [kHz]		
A	L to N before fuse	BI	250	354	--	1500	6.7
B	Primary to enclosure	DI	250	354	--	3000	6.7
C	Primary to secondary	DI	251	532	--	3000	K.3

NOTE 1 – Type of insulation:

BI = BASIC INSULATION  
 DI = DOUBLE INSULATION  
 PI = PROTECTIVE IMPEDANCE  
 RI = Reinforced INSULATION  
 SI = Supplementary INSULATION  
 see also Form A.15 for further details

NOTE 2 - Types of voltage

Peak impulse test voltage (pulse)  
 r.m.s.  
 d.c.  
 peak

NOTE 3 - OVERVOLTAGE CATEGORIES or POLLUTION DEGREES which differ should be shown under "Comments"

Supplementary Information:

IEC/EN 61010-1												
Clause	Requirement — Test					Result — Remark					Verdict	
<b>6.7</b>	<b>TABLE: Insulation requirements- Clearances and Creepage</b>										<b>Form A.15</b>	<b>P</b>
6.2.2	Examination					6.5.4	Protective impedance					—
6.4.2	ENCLOSURES and protective barriers					6.5.6	Current- or voltage-limiting device					—
6.4.4	Impedance					9.6.1	BASIC INSULATION between opposite polarity					—
Area	Location (See Form A.14)	Insulation type (NOTE 1)	WORKING VOLTAGE (NOTE 2)			Clearance		Creepage		CTI	Verdict	Comments
			RMS [V]	Peak [V]	Frequency [kHz]	Required [mm]	Measured [mm]	Required [mm]	Measured [mm]			
A	L to N before fuse	BI	250	354	--	1.8	3.3	2.1	3.3	IIIb	P	
B	Primary to enclosure	DI	250	354	--	3.5	14.44	4.2	14.44	IIIb	P	
C	Primary to secondary	DI	251	532	--	3.5	8.3	4.2	10.3	IIIb	P	
NOTE 1 – refer to Form A.14 for type of insulation shown in the insulation diagram						NOTE 2 - to be used for definition of required insulation (see Form A.14)						
Input supply voltage.....:		240	V	50	Hz							
Supplementary information:												

IEC/EN 61010-1			
Clause	Requirement — Test	Result — Remark	Verdict

<b>6.7</b>	<b>TABLE: Insulation requirements- Clearances and Creepages</b>	<b>Form A.16</b>	<b>P</b>
6.4.2	ENCLOSURES or PROTECTIVE BARRIERS	9.6.1	Overcurrent protection basic insulation between MAINS parts
8	Mechanical resistance to shock and impact	10.5.1	Integrity of CLEARANCES and CREEPAGE distances

Area	Location (See Form A.14)	Insulation type	Mechanical tests (NOTE)					Test at max. RATED ambient (10.5.1)	Measured after test (if required)		Verdict	Comments
			Applied force N	Rigidity (8.2)		Drop (8.3)			Clearance mm	Creepage distance mm		
				Static (8.2.1)	Impact (8.2.2)	Normal (8.3.1)	Hand-held/ Plug-in					
A	L to N before fuse	BI	30	Intact	Intact	Intact	--	--	3.3	3.3	P	--
B	Primary to enclosure	DI	30	Intact	Intact	Intact	--	--	14.44	14.44	P	--
C	Primary to secondary	DI	30	Intact	Intact	Intact	--	--	8.3	10.3	P	--

NOTE – Refer to Form A.18 for dielectric strength tests following the above tests.

Supplementary information:

IEC/EN 61010-1							
Clause	Requirement – Test			Result — Remark		Verdict	
<b>6.7.2.2.2</b>	<b>TABLE: Reliability of potted components</b>			<b>Form A.17 (optional)</b>		N/A	
<b>14.1 b)</b>	<b>Components and subassemblies</b>						
<b>Temperature Cycling Test</b>							
Manufacturer .....							
Type.....							
Construction .....							
Potting compound .....							
CREEPAGE distances measured.....							
CLEARANCES measured .....							
Thickness through insulation.....							
Adhesive test Pass/Fail .....							
Test temperature T °C.....							
<b>Cycles at U= AC 500 V</b>				<b>Leakage current (500 V) mA</b>			
Number of cycles	Date			68 h /	1 h /	2 h /	1 h /
				125 °C	25 °C	0 °C	25 °C
1. Cycle from		to					
2. Cycle from		to					
3. Cycle from		to					
4. Cycle from		to					
5. Cycle from		to					
6. Cycle from		to					
7. Cycle from		to					
8. Cycle from		to					
9. Cycle from		to					
10. Cycle from		to					
<b>After Cycling Test :</b>							
Humidity conditioning				48 h			
Requirements for dielectric strength (s. insulation diagram)				Test voltage V r.m.s		Verdict	
Basic insulation _____ V r.m.s.							
Supplementary insulation _____ V r.m.s.							
Reinforced insulation _____ V r.m.s.							
NOTE - to be used for evaluation of components containing insulation through solid insulation, when the component standard require thermal cycling test. Ref Clause 14.1 and Figure 15, option b)							
Supplementary information:							



IEC/EN 61010-1						
Clause	Requirement — Test			Result — Remark	Verdict	
<b>6.8</b>	<b>TABLE: Dielectric strength tests</b>				<b>Form A.18</b>	<b>P</b>
4.4.4.1 b)	Conformity after application of SINGLE FAULT CONDITIONS <sup>1</sup>					
6.4	Primary means of protection <sup>2</sup>					
6.6	Connections to external circuits					
6.7.	Insulation requirements <sup>2</sup> (see Annex K)					
6.10.2	Fitting of non-detachable MAINS supply cords <sup>1</sup>					
9.2 a) 2)	Eliminating or reducing the sources of ignition within the equipment					
9.4 c)	Limited-energy circuit					
9.6.1	Overcurrent protection basic insulation between MAINS - parts					
	Test site altitude .....			m		—
	Test voltage correction factor (see table 10) .....					—
Location or references from Forms A.1 and A.14	Clause or sub-clause	Humidity	Working voltage	Test voltage	Comments (NOTE)	Verdict
		Yes/No	V	r.m.s./peak/d.c.		
--	--	--	--	--	Before humidity / after humidity	--
Line to Neutral	--	--	240	3000r.m.s		P
Primary circuit to secondary circuit	--	--	251	3000r.m.s		P
Primary circuit to adapter plastic enclosure	--	--	251	3000r.m.s		P
Primary circuit to tester plastic enclosure	--	--	251	3000r.m.s		P
--	--	--	--	--	After 8.2.1 /after 8.2.2/ after/8.3.1/ after 11.2	--
Primary circuit to tester plastic enclosure	--	--	251	3000r.m.s		P

<sup>1</sup> Record the fault, test or treatment applied before the dielectric strength test. <sup>2</sup> Humidity preconditioning required.  
NOTE: Test duration may be recorded.

Supplementary information:

IEC/EN 61010-1

Clause	Requirement — Test	Result — Remark	Verdict
--------	--------------------	-----------------	---------

<b>6.10.2</b>	<b>TABLE: Cord anchorage</b>	<b>Form A.19</b>	<b>N/A</b>
---------------	------------------------------	------------------	------------

Location	Mass [kg]	Pull [N]	Verdict	Torque [Nm]	Verdict	Comment

Dielectric strength test for 1 min. (6.8.3.1)..... :	V r.m.s.
--	----------

Supplementary information:

IEC/EN 61010-1

Clause	Requirement — Test	Result — Remark	Verdict
--------	--------------------	-----------------	---------

7.	<b>TABLE: Protection against mechanical HAZARDS</b>	<b>Form A.20</b>	N/A
7.3.4	Limitation of force and pressure		—
7.3.5	Gap limitations between moving parts		—

Part / Location	Clause 7.3.4		Clause 7.3.5.1								Clause 7.3.5.2			Verdict	Comments
	Continuous	Temporary	Minimum gaps [mm]								Maximum gaps [mm]				
	Contact pressure max. 50 N/cm <sup>2</sup> @ max. 150 N	max. 250 N / 3 cm <sup>2</sup> @ max. 0,75 s	Torso 500	Head 300	Leg 180	Foot 120	Toes 50	Arm 120	Hand 100	Finger 25	Head 120	Foot 35	Finger 4		

Supplementary information:

IEC/EN 61010-1			
Clause	Requirement – Test	Result - Remark	Verdict
<b>8.2</b>	<b>ENCLOSURE rigidity test</b>	<b>Form A.21A</b>	<b>P</b>
8.2.1	Static test		
	Material of enclosure .....	<del>Meta</del> / non-metallic	—
	Preparation for the test:	--	—
	Operated at ambient temperature .....	40 ° C   1 h	—
	Location	Comments	Verdict
	1)Top	Intact	P
	2)side left/right	Intact	P
	3)bottom	Intact	P
Supplementary information:			
<b>8.2.2</b>	<b>Dynamic test</b>		<b>P</b>
	Material of enclosure .....	<del>Meta</del> / non-metallic	—
	Corresponding IK-code.....	--	—
	Preparation for the test:	--	—
	Cooled to (temperature) .....	0 ° C	—
	Location	Comments	Verdict
	1) Top	Remain intact	P
	2) Side left / right	Remain intact	P
	3) Bottom	Remain intact	p
Supplementary information:			

IEC/EN 61010-1				
Clause	Requirement – Test	Result - Remark		Verdict
<b>8.3</b>	<b>Drop test</b>	<b>Form A.21B</b>		<b>P</b>
8.3.1	Other equipment			
	Location	Raised up to		—
		[mm]	30 °	—
	1)Left top	100	30 °	--
	2)Left bottom	100	30 °	--
	3)right top	100	30 °	--
	4)right bottom	100	30 °	--
Supplementary information:				
8.3.2	Hand-held EQUIPMENT and direct plug-in equipment			N/A
	Material of enclosure .....	Metal / non-metallic		—
	Preparation for the test:	Cooled 10min		—
	Cooled to (temperature) .....	° C		—
	Location	Comments		Verdict
	1) Side			
	2) Edge			
	3) Corner			
Supplementary information:				

IEC/EN 61010-1			
Clause	Requirement — Test	Result — Remark	Verdict

9	TABLE: Protection against the spread of fire			Form A.22	P
Item	Source of HAZARD or area of the equipment considered (circuit, component, liquid etc.)	Protection Method (9.1 a, b or c)	Protection details	Verdict	
--	Primary circuit in adapter	9.1b	LPS power was used	P	
--	Battery output	9.1b	LPS power was used	P	

Supplementary information:

IEC/EN 61010-1							
Clause	Requirement — Test	Result — Remark				Verdict	
<b>9.3.2</b>	<b>TABLE: Constructional requirements</b>	<b>Form A.23</b>				<b>N/A</b>	
14.7	Printed circuit boards						
Material tested .....							
Generic name .....							
Material manufacturer .....							
Type .....							
Colour .....							
Conditioning details .....							
		Sample					
		1	2	3	4	5	6
Thickness of specimen	mm						
Duration of flaming after first Application	s						
Duration of flaming plus glowing After second application	s						
Specimen burns to holding clamp	Yes/No						
Cotton ignited	Yes/No						
Sample result	Pass/Fail						
Supplementary information:							

IEC/EN 61010-1			
Clause	Requirement — Test	Result — Remark	Verdict

<b>9.4</b>	<b>TABLE: Limited-energy circuit</b>					<b>Form A.24</b>	<b>P</b>
Item or Location  (see Form A.22)	9.4 a)	9.4 b) Current limitation (NOTE)		9.4 c)	Decision	Comments	
	Maximum potential in circuit voltage r.m.s./d.c. [V]	Maximum available current [A]	Overload protection after 120 s [A]	Circuit separation	Yes/No		
Primary circuit in adapter	8.54Vdc	0.64	0.62	--	Yes		
Battery output	8.41Vdc	3.63	0	--	Yes		

NOTE – Maximum values see Tables 17 and 18 of IEC 61010-1  
 Supplementary information:



IEC/EN 61010-1

Clause	Requirement — Test	Result — Remark	Verdict
--------	--------------------	-----------------	---------

9.5	TABLE: Requirements for equipment containing or using flammable liquids		Form A.25	N/A
Type of liquid		9.5 Flammable liquids		Verdict
		b) Quantity	c) Containment	

Supplementary information:

IEC/EN 61010-1					
Clause	Requirement — Test	Result — Remark			Verdict
<b>10.</b>	<b>TABLE : Temperature Measurements</b>	<b>Form A.26A</b>			<b>P</b>
10.1	Surface temperature limits – NORMAL CONDITION and / or SINGLE FAULT CONDITION				
10.2	Temperature of windings – NORMAL CONDITION and / or SINGLE FAULT CONDITION				
10.3	Other temperature measurements				
Operating conditions:					
Frequency..... :	Hz	Test room ambient temperature (ta).... :		°C	
Voltage..... :	V	Test duration..... :		h	min
Part / Location	$t_m$ [°C]	$t_c$ [°C]	$t_{max}$ [°C]	Verdict	Comments
90V/60Hz	--	--	--	--	--
Ambient	23.9	40.0	--		
PCB	25.2	41.3	130		
Battery surface	27.3	43.4	ref		
Battery wire	25.5	41.6	80		
Test terminal	30.5	46.6	65		
External enclosure	24.5	40.6	65		
Transformer winding(adapter)	58.6	74.7	130		
Plastic enclosure (adapter)	43.3	59.4	85		
Button	25.7	41.8	70		
264V/50Hz	--	--	--	--	--
Ambient	24.5	40.0	--		
PCB	25.7	41.2	130		
Battery surface	27.9	43.4	ref		
Battery wire	26.2	41.7	80		
Test terminal	29.0	44.5	65		
External enclosure	25.7	41.2	65		
Transformer winding(adapter)	62.3	77.8	130		
Plastic enclosure (adapter)	43.9	59.4	85		
Button	26.1	41.6	70		
Battery offers: 7.4Vdc	--	--	--	--	--
Ambient	24.5	40.0	--		
PCB	25.7	41.2	130		
Battery surface	27.9	43.4	ref		
Battery wire	26.1	41.6	80		
Test terminal	30.0	45.5	65		
External enclosure	25.1	40.6	65		

IEC/EN 61010-1						
Clause	Requirement — Test	Result — Remark		Verdict		
<b>10.</b>	<b>TABLE : Temperature Measurements</b>	<b>Form A.26A</b>		<b>P</b>		
10.1	Surface temperature limits – NORMAL CONDITION and / or SINGLE FAULT CONDITION					
10.2	Temperature of windings – NORMAL CONDITION and / or SINGLE FAULT CONDITION					
10.3	Other temperature measurements					
Operating conditions:						
Frequency..... :	Hz	Test room ambient temperature (ta) ... :	°C			
Voltage..... :	V	Test duration..... :	h	min		
Part / Location		$t_m$ [°C]	$t_c$ [°C]	$t_{max}$ [°C]	Verdict	Comments
Button		26.0	41.5	70		
NOTE 1 - $t_m$ = measured temperature $t_c = t_m$ corrected ( $t_m - t_a + 40$ °C or max. RATED ambient) $t_{max}$ = maximum permitted temperature NOTE 2 - see also 14.1 with reference to component operating conditions NOTE 3 - Record values for NORMAL CONDITION and / or SINGLE FAULT CONDITION in this Form use additional form if necessary NOTE 4 - see Form A.26B for details of winding temperature measurements						
Supplementary information:						

IEC/EN 61010-1									
Clause	Requirement — Test	Result — Remark				Verdict			
<b>10.2</b>	<b>TABLE: Temperature of windings Resistance method Temperature Measurements</b>					<b>Form A.26B</b>	<b>N/A</b>		
4.4.2.7	MAINS transformers								
14.2.1	Motor temperatures								
Operating conditions...:									
Frequency.....:		Hz	Test room ambient temperature (ta1/ta2):			/	°C (initial / final)		
Voltage.....:		V	Test duration.....:			h	min		
Part / Designation	Rcold [Ω]	Rwarm [Ω]	Current [A]	t <sub>r</sub> [K]	t <sub>c</sub> [°C]	t <sub>max</sub> [°C]	Verdict	Comments	
NOTE 1- R <sub>cold</sub> = initial resistance t <sub>r</sub> = temperature rise t <sub>max</sub> = maximum permitted temperature				R <sub>warm</sub> = final resistance t <sub>c</sub> = t <sub>c</sub> corrected (t <sub>c</sub> = t <sub>c</sub> - { t <sub>a2</sub> - t <sub>a1</sub> } + [40 °C or max RATED ambient])					
NOTE 2 - Indicate insulation class (IEC 60085) under comments (optional)									
NOTE 3 - Record values for NORMAL CONDITION and / or SINGLE FAULT CONDITION in this Form use additional form if necessary									
Supplementary information:									



IEC/EN 61010-1			
Clause	Requirement — Test	Result — Remark	Verdict
<b>10.5.3</b>	<b>TABLE: Insulating Materials</b>	<b>Form A.28</b>	N/A
10.5.3 1)	Ball-pressure test		
	Max. allowed impression diameter ..... :	2 mm	—
Part	Test temperature [°C]	Impression diameter [mm]	Verdict
Supplementary information:			
10.5.3 2)	<b>Vicat softening test (ISO 306)</b>	<b>Form A.29</b>	N/A
Part	Vicat softening temperature [°C]	Thickness of sample [mm]	Verdict
			N/A
Supplementary information:			

IEC/EN 61010-1

Clause	Requirement — Test	Result — Remark	Verdict
--------	--------------------	-----------------	---------

<b>8</b>	<b>TABLE: Mechanical resistance to shock and impact</b>		<b>Form A.30</b>
<b>11</b>	<b>Protection against HAZARDS from fluids</b>		<b>P</b>

Voltage tests can be carried out once after performing the tests of clause 8 and clause 11. However, if voltage tests are carried out separately after each set of tests, two forms can be used.

Location (see Form A.14)	Clause 8 tests				Clause 11 tests				Working voltage [V]	Test voltage [V]	Verdict	Comments
	Static (8.2.1) 30 N	Impact (8.2.2)	Normal (8.3.1)	Handheld Plug-in	Cleaning (11.2)	Spillage (11.3)	Overflow (11.4)	IEC 60529 (11.6)				
A	--	--	--	--	--	--	--	--	250	1500	P	Remain intact
B	--	--	--	--	--	--	--	--	250	3000	P	Remain intact
C	--	--	--	--	--	--	--	--	251	3000	P	Remain intact

NOTE – Use r.m.s., d.c. or peak to indicate the used test voltage.

Supplementary information:

IEC/EN 61010-1			
Clause	Requirement — Test	Result — Remark	Verdict

<b>11.7.2</b>	<b>TABLE: Leakage and rupture at high pressure</b>					<b>Form A.31</b>	N/A
Part	Maximum permissible working pressure [MPa]	Test pressure [MPa]	Leakage Yes / No	Deformation Yes / No	Burst Yes / No	Comments	

NOTE – see also Annex G with requirements for USA and Canada.

Supplementary information:

<b>11.7.3</b>	<b>Leakage from low-pressure parts</b>			<b>Form A.32</b>	N/A
Part	Test pressure [MPa]	Leakage Yes / No	Comments		

Supplementary information:



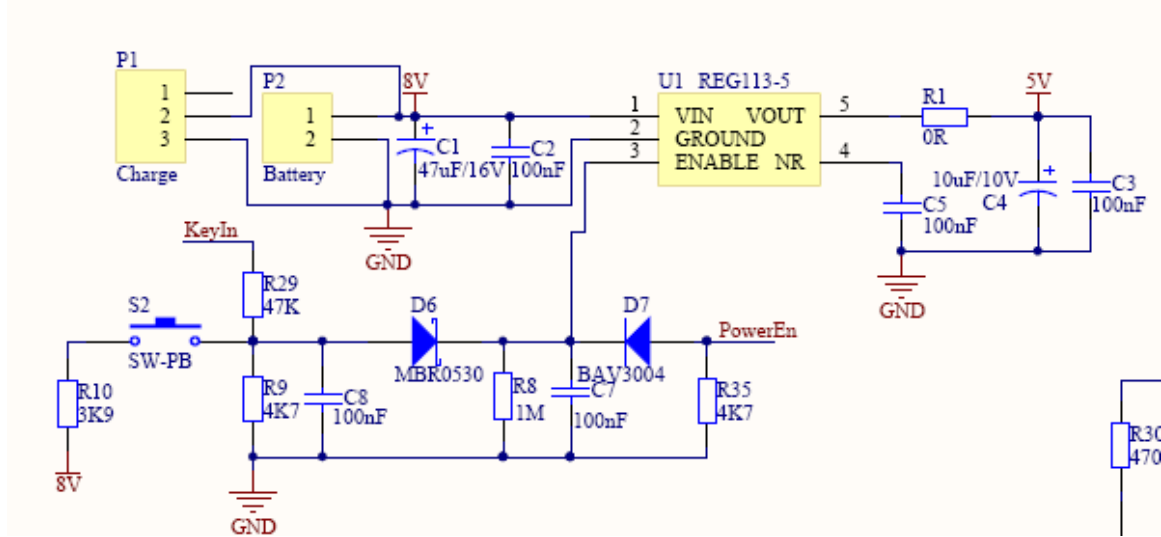
IEC/EN 61010-1			
Clause	Requirement — Test	Result — Remark	Verdict
<b>12.2.1</b>	<b>TABLE: Ionizing radiation</b>	<b>Form A.33</b>	<b>N/A</b>
12.2.1.2	Equipment intended to emit radiation		
Locations tested	Measured values [μSv/h]	Verdict	Comments
Supplementary information:			
12.2.1.3	Equipment not intended to emit radiation	<b>Form A.34</b>	<b>N/A</b>
	Max. allowed effective dose rate at 100 mm.....:	1 μSv/h	—
Locations tested	Measured values [μSv/h]	Verdict	Comments
Supplementary information:			

IEC/EN 61010-1			
Clause	Requirement — Test	Result — Remark	Verdict
<b>12.5.1</b>	<b>TABLE: Sound level</b>	<b>Form A.35</b>	<b>N/A</b>
Locations tested	Measured maximum sound pressure level dB(A)	Calculated maximum sound power level	
At operator's normal position and at bystanders' positions			
a)			
b)			
c)			
d)			
e)			
f)			
Supplementary information:			
<b>12.5.2</b>	<b>Ultrasonic pressure</b>	<b>Form A.36</b>	<b>N/A</b>
Locations tested	Measured values		Comments
	[dB]	[kHz]	
At operator's normal position			
At 1 m from the ENCLOSURE			
a)			
b)			
c)			
d)			
e)			
NOTE – No limit is specified at present, but a limit of 110 dB above the reference pressure value of 20 μPa is under consideration for applicable frequencies between 20 kHz and 100 kHz.			
Supplementary information:			

IEC/EN 61010-1

Clause	Requirement — Test	Result — Remark	Verdict
--------	--------------------	-----------------	---------

<b>13.2.2</b>	<b>TABLE: Batteries</b>	<b>Form A.37</b>	<b>P</b>
Battery load and charging circuit diagram:			



Battery type.....	LITHIUM BATTERY	—
Battery manufacturer/model/catalogue No. ....	SPARD /YT751448/--	—
Battery ratings.....	--	—
Reverse polarity instalment test	--	

Single component failures	Verdict	
	Open circuit	Short circuit
Battery output	Voltage: 8.3V	Unit shut down, short circuit current: 4A and immediately turn to zero
	Open circuit	Result
Battery reverse polarity	Voltage: 8.3V	Unit Can't turn on

Supplementary information:

## IEC/EN 61010-1

Clause	Requirement — Test	Result — Remark	Verdict
--------	--------------------	-----------------	---------

<b>14.3</b>	<b>TABLE: Overtemperature protection devices</b>	<b>Form A.38</b>	<b>N/A</b>
-------------	--	------------------	------------

## Reliability test

Component	Type (NOTE)	Verdict	Comments

NOTE:  
 NSR = non-self-resetting (10 times)  
 NR = non-resetting (1 time)  
 SR = self-resetting (200 times)

Supplementary information:

IEC/EN 61010-1				
Clause	Requirement — Test	Result — Remark		Verdict
<b>4.4.2.7</b>	<b>TABLE: MAINS transformer</b>	<b>Form A.39</b>		<b>N/A</b>
4.4.2.7.2	Short circuit			
14.6	MAINS transformers tested outside equipment			
Type .....	:			—
Manufacturer.....	:			—
Test in equipment				
Test on bench				
Test repeated inside equipment (see 14.6)				
Optional – Insulation class (IEC 60085) of the lowest rated winding .....		:		—
Winding identification				
Type of Protector for winding (NOTE 1)				
Elapsed time				
Current, A primary				
secondary				
Winding temperature, °C primary				
(see NOTE 2) secondary				
Tissue paper / cheesecloth OK ? (Pass / Fail)				
Voltage tests (see NOTE 3)				
Primary to secondary	_____ V _____			
Primary to core	_____ V _____			
Secondary to secondary	_____ V _____			
Secondary to core	_____ V _____			
Verdict				
NOTE 1:	Primary fuse	- PF / ( )	A	
	Secondary fuse	- SF / ( )	A	
	Overtemperature protection	- OP / ( )	°C	
	Impedance protection	- Z		
NOTE 2:	Indicate method of measurement	- TC = with thermocouple		
		- R = resistance method		
	If resistance method is used, record resistance in cold and warm condition in FormA.26B.			
NOTE 3:	Record the voltage applied and the type of voltage (r.m.s. / d.c. / peak) and for results use NB = no breakdown or B = breakdown			
Supplementary information:				

IEC/EN 61010-1				
Clause	Requirement — Test	Result — Remark		Verdict
<b>4.4.2.7</b>	<b>TABLE: MAINS transformer</b>	<b>Form A.40</b>		N/A
4.4.2.7.3	Overload tests (for MAINS transformers)			
14.6	MAINS transformers tested outside equipment			
Type .....				—
Manufacturer .....				—
Test in equipment				
Test on bench				
Test repeated inside equipment (see 14.6)				
Optional – Insulation class (IEC 60085) of the lowest rated winding .....				—
Winding identification				
Type of Protector for winding (NOTE 1)				
Elapsed time				
Current, A	primary			
	secondary			
Winding temperature, °C	primary			
	(see NOTE 2) secondary			
Tissue paper / cheesecloth OK ? (Pass / Fail)				
Voltage tests (see NOTE 3)				
Primary to secondary	_____ V _____			
Primary to core	_____ V _____			
Secondary to secondary	_____ V _____			
Secondary to core	_____ V _____			
Verdict				
NOTE 1:	Primary fuse	- PF / ( )	A	
	Secondary fuse	- SF / ( )	A	
	Overtemperature protection	- OP / ( )	°C	
	Impedance protection	- Z		
NOTE 2:	Indicate method of measurement	TC = with thermocouple		
		R = resistance method		
	If resistance method is used, record resistance in cold and warm condition in FormA.26B.			
NOTE 3:	Record the voltage applied and the type of voltage (r.m.s. / d.c. / peak) and for results use NB = no breakdown or B = breakdown			
Supplementary information:				

IEC/EN 61010-1

Clause	Requirement — Test	Result — Remark	Verdict
--------	--------------------	-----------------	---------

<b>14.8</b>	<b>TABLE: Transient overvoltage limiting devices</b>								<b>Form A.41</b>	N/A
Component / Designation	Overvoltage Category	MAINS voltage [V rms]	Test voltage [V]	$t_m$ [°C]	$t_c$ [°C]	$t_{max}$ [°C]	Rupture Yes / No	Circuit breaker tripped	Verdict	Comments
Test room ambient temperature .....		°C								
NOTE - $t_m$ = measured temperature $t_c$ = $t_m$ corrected ( $t_m - t_a + 40$ °C or max. RATED ambient) $t_{max}$ = maximum permitted temperature Conformity is checked by applying 5 positive and 5 negative impulses with the applicable impulse withstand voltage, spaced up to 1 min apart, from a hybrid impulse generator (see IEC 61180-1).										
Supplementary information:										

IEC/EN 61010-1			
Clause	Requirement – Test	Result — Remark	Verdict

<b>Annex H</b>	<b>TABLE: Qualification of conformal coating for protection against pollution</b>	<b>Form A.42</b>	N/A
----------------	---	------------------	-----

Technical properties											
Manufacturer										—	
Type										—	
Meet requirements of ANSI / UL 746E				[yes / no]							
Manufacturer declaration of coating material				[yes / no]							
Operating temperature of coating				[ ] °C							
Comparative tracking index (CTI)				[ ]							
Insulation resistance				[ ] Ω							
Dielectric strength				[ ] V							
UV resistance (if required)				[yes / no]							
Flammability rating											
Preparation of the test specimens conducted				[yes / no]							
Item	Test conditioning	Parameter	Td h	Samples						Verdict	Comments
				1	2	3	4	5	6		
1	Scratch resistance										
	Visual inspection										
2	Cold		24								
3	Dry heat		48								
4	Rapid temp. change										
5	Damp heat		24								
6	Adhesion of coating	5 N									
	Visual inspection										
7	Humidity		48								
8	Insulation resistance	>= 100 Ω									
	Visual inspection										

NOTE Td = Test duration time

Supplementary information:



IEC/EN 61010-1

Clause	Requirement – Test	Result — Remark	Verdict
--------	--------------------	-----------------	---------

	<b>TABLE: Additional or special tests conducted</b>	<b>Form A.43</b>	N/A
--	---	------------------	-----

Clause and name of test	Test type and condition	Observed results	—

Supplementary information:

IEC/EN 61010-1			
Clause	Requirement — Test	Result — Remark	Verdict

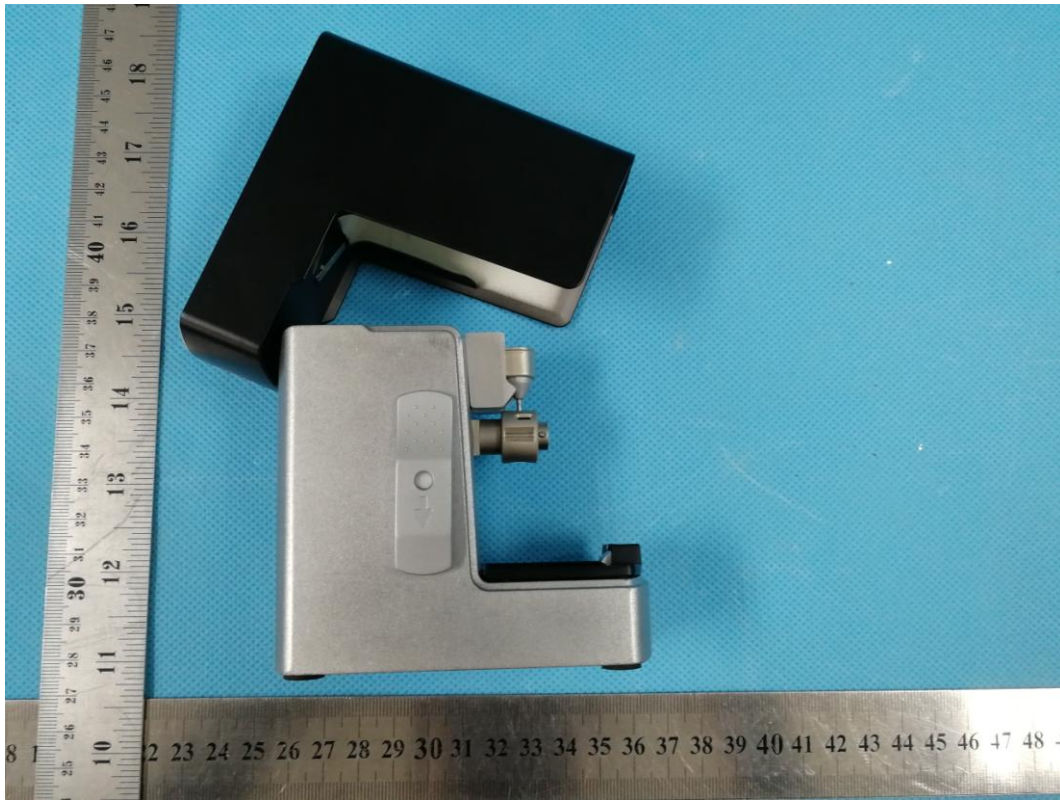
TABLE 1: - List of components and circuits relied on for safety							P
Unique component reference or location	Application/function	Manufacturer / trademark (NOTE 1)	Type / model	Technical data (NOTE 2)	Standard	Mark(s) of conformity evidence of acceptance (NOTE 3 and 4)	
Adapter	Power support	DONGGUAN TEAMWISE ELECTRONIC CO., LTD	ASC-0966-01	Input: 100V~240Vac, 50Hz/60Hz, 300mA; Output: 8.4Vdc, 0.5A	EN60950-1:2006+ A11:2009+A1:2010 +A12:2011+A2:2013	Flow chart for conformity options a Shenzhen Anbotek., LTD Report NO:R011505201S	
PCB	function	GOLDEN SEAGULL TECHNOLOGY LTD	GSG-D	V-0, 130°C	UL 94	Flow chart for conformity options a Report No:E348139	
Battery	Power support	YUNTONG Power Co.,Ltd	YT751448	7.4Vdc 450mAh 3.33Wh	IEC62133:2012	Flow chart for conformity options a Report No: Intertek 150520130GZU-001	
Battery wire	Power support	DONGGUAN ZZ ELECTRONICS&WIRE SCIENCE AND TECHNOLOGY CO.,LTD	1007	28AWG 80°C,	IEC61010-1:2010	Tested in appliance	
Enclosure	Fire protection	CHI MEI CORPORATION	ABS+PC	2.0 mm HB75	UL 94	Flow chart for conformity options a Report No:E56070	
UV LED	Lighting	SEOUL VIOSYS	CUD8DF1A	30mA 200mW	IEC61010-1:2010	Tested in appliance	

NOTE → 1 List all different manufacturers of the above components → 4 asterisk indicates mark assuring agreed level of surveillance  
 → 2 May include electrical, mechanical values  
 → 3 List licence no or method of acceptance

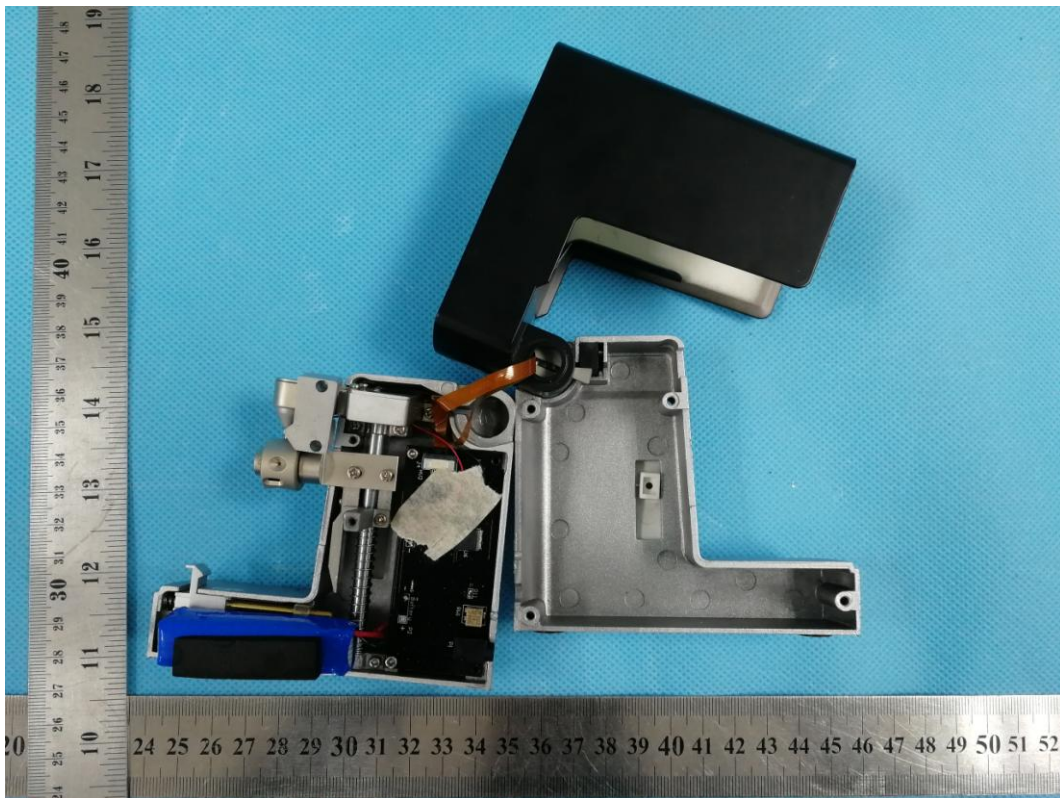


### Main unit

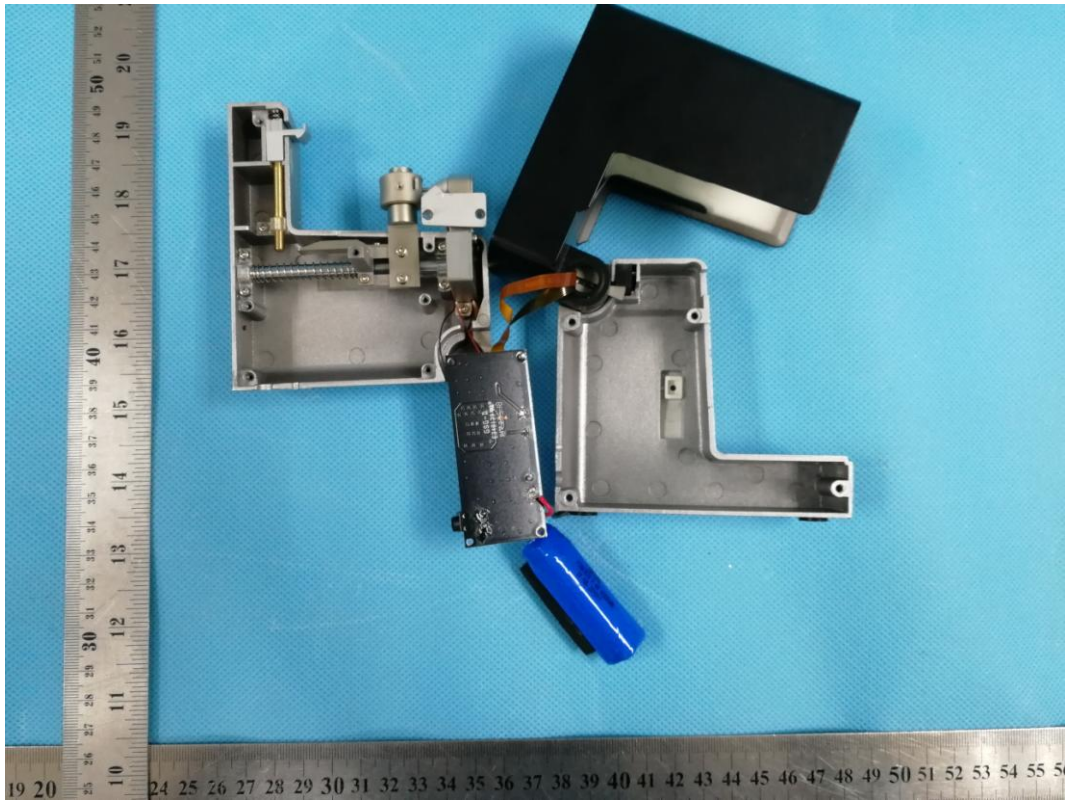




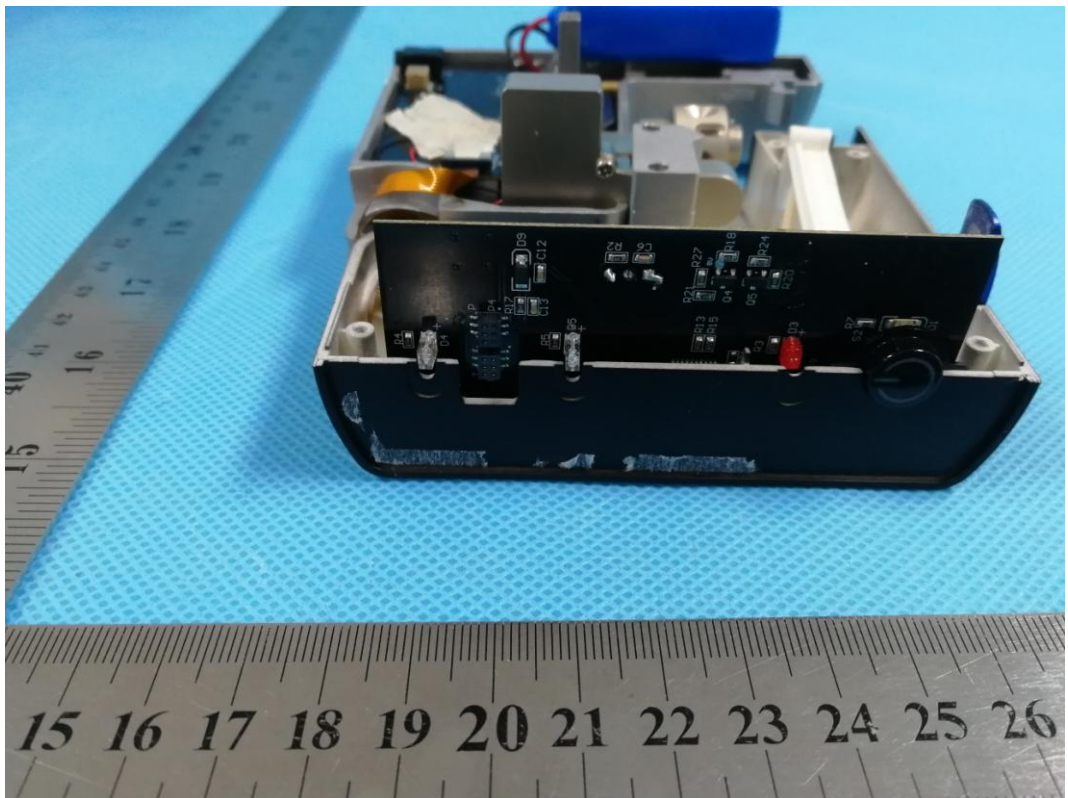
Internal View 1



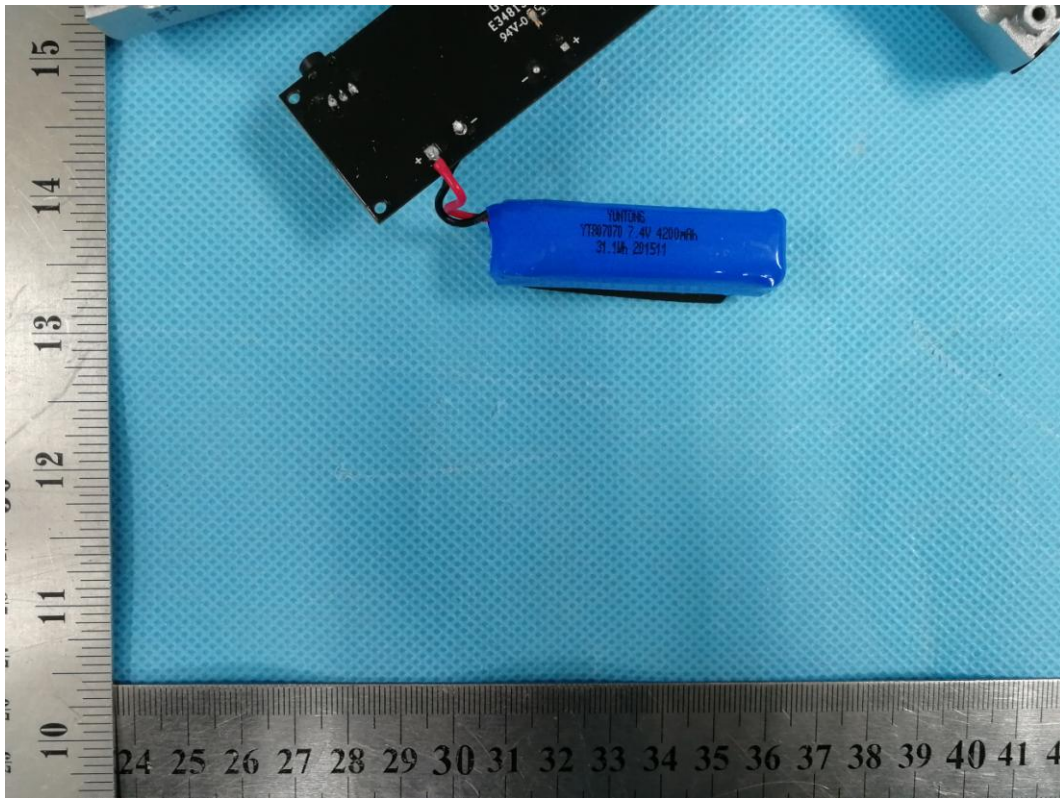
### Internal View 2



### Internal View 3



**Battery**



\*\*\*\*\*End of Appendix 1: Product Photographs\*\*\*\*\*